

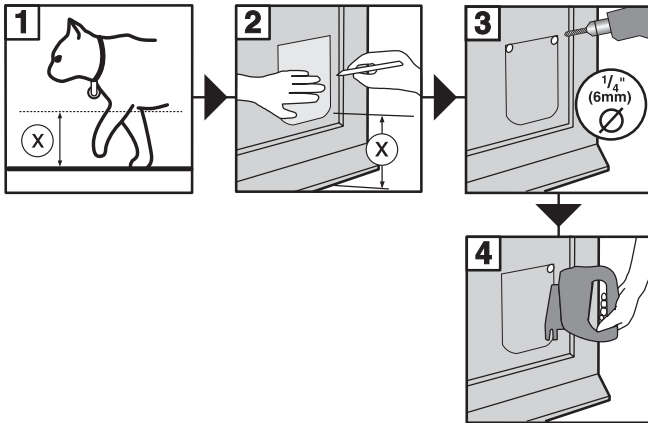
# FITTING INSTRUCTIONS AND TEMPLATE

**D** SCHABLONE

**F** GABARIT

**NL** SJABLOON

**E** PLANTILLA

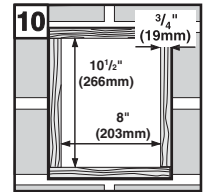


## FOR WOODEN DOORS AND PLASTIC PANELS

1. It is recommended that the bottom of the hole is approximately the same level as your tallest pet's stomach.
2. Place this template in desired position on flat area of door and draw round completely.
3. Prior to cutting hole, drill 2 holes of approximately 1/4" (6mm) diameter in top corners.
4. Use an electric jig-saw to cut along the inside of the drawn line. Be careful to cut hole square to the door, particularly with thicker doors. Ensure that the frames are free-fitting in the hole.
5. Determine the thickness of the panel in your door (†) (see fig 5).

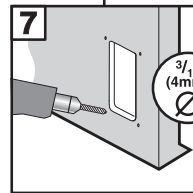
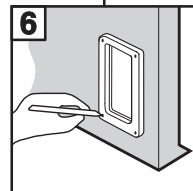
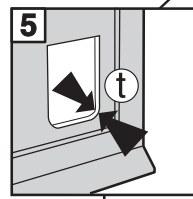
## WALLS

After making a hole in your wall, line with 3/4" (19mm) plywood or similar material. As shown in fig 10. This gives a neat tunnel to the installation and readily accepts the fixing screws.



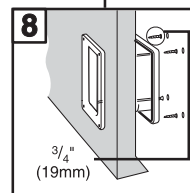
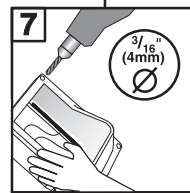
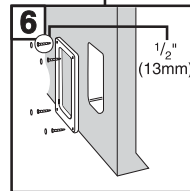
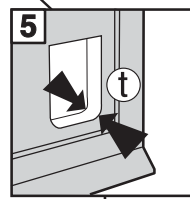
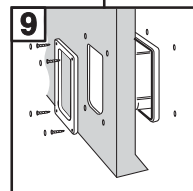
## For Panels † 0 - 7/8" (0-23mm):

6. Position interior frame on inside of door and mark the 4 screw positions.
7. Remove frame and drill screw clearance holes in panel to approx. 3/16" (4mm) diameter.
8. Select the appropriate screws for the panel in your door (see fig 8).
9. Then, using the appropriate screws and working from the inside of the house, tighten the interior frame to the exterior frame. When happy with installation cover screw heads with caps supplied.



†	
0 - 1/8" (0 - 4mm)	1/2" (13mm)
1/8" - 3/8" (4 - 10mm)	3/4" (19mm)
3/8" - 5/8" (10 - 16mm)	1" (25mm)*
5/8" - 7/8" (16 - 23mm)	1 1/4" (33mm)

\*Screw not supplied



## For Panels † 7/8" + (24mm +):

6. First screw interior frame to inside of panel with short 1/2" (13mm) screws.
7. Next drill out the 4 screw holes in the exterior frame to allow close clearance on screw. Recommended drill 3/16" (4mm) diameter.
8. Finally fix exterior frame to exterior of door using 3/4" (19mm) screws. When happy with installation, cover screw heads with caps supplied.

 [www.pet-mate.com](http://www.pet-mate.com)

 +44 (0)1932 700 001  
N America (936) 760 4333

IMPORTANT - PLEASE READ BEFORE USE  
**ELECTROMAGNETIC  
PET DOOR INFORMATION**



(D)

WICHTIG - BITTE VOR MONTAGE DURCHLESEN  
**ELEKTROMAGNETISCHE  
TIERTÜRINFORMATIONEN**

(F)

IMPORTANT - A LIRE AVANT USAGE  
**PORTE ELECTROMAGNETIQUE  
INFORMATIONS**

(E)

IMPORTANTE - LEA ANTES DE USAR  
**INFORMACIÓN SOBRE LA  
PUERTA ELECTROMAGNÉTICA  
PARA PERROS**

(NL)

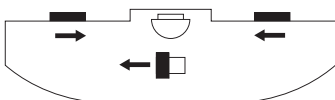
BELANGRIJK! LEES DIT EERST VOOR GEBRUIK  
**INFORMATIE VOOR  
ELECTROMAGNETISCH  
DEURLUIK VOOR HUISDIEREN**

 [www.pet-mate.com](http://www.pet-mate.com)

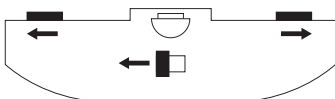
 **+44 (0)1932 700 001**  
N America (936) 760 4333

### 4-Way Lock Instructions

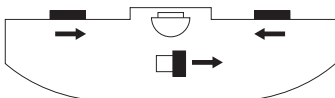
- (D) Anleitung zur 4-Wegverschluss
- (F) Mode d'emploi du verrou 4 positions
- (E) Instrucciones para el cierre de 4 modalidades
- (NL) Vierwegsluiting



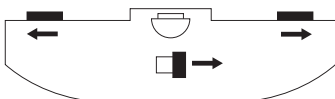
**Unlocked**  
Aufgesperrt  
Déverrouillé  
Abierto  
Niet vergrendeld



**In only**  
Nur hinein  
Entrée seulement  
Entrada solamente  
Alleen maar In



**Out Only**  
Nur hinaus  
Sortie seulement  
Salida solamente  
Alleen maar Uit



**Locked**  
Abgesperrt  
Verrouillé  
Cerrado  
Vergrendeld

## 1. Introduction

This Electromagnetic pet door is designed to selectively admit only pets wearing a collar carrying a magnet. Normally the flap is prevented from opening into the house by an electromagnetic catch, thus preventing stray pets from entering your house. However, when your pet approaches wearing the magnet, a detector sited in the outer edge of the body moulding senses the magnet and the electromagnetic catch is automatically depressed. Your pet may then push open the flap with its nose to enter the house. As soon as your pet has passed through the flap the electromagnetic catch returns to its normal position, so that following pets without a magnet are prevented from entering. Pets may exit from the flap without wearing a magnet.

## 2. Battery Installation

Ease off the battery cover by pulling on the tabs positioned at each side. Alternatively, insert a small screwdriver into the centre slot located on battery cover and lever away from body moulding. The recommended battery is a 9 volt alkaline, size 6F22 (e.g. Duracell MN1604, Ever Ready Gold Seal 6LF22, etc.). An alkaline battery should give approximately 12 months normal life. Alternatively a rechargeable battery may be used. Connect the battery to the loose connector and slide into position to the left hand side of the electromagnetic catch assembly. (NB- slide battery in terminal end first). Replace the battery cover firmly.

## 3. Collar Magnet

**The collar magnet should be attached directly to the cat's collar with the paw print symbol facing forwards (see fig 4). Not doing so will affect this products performance.**

It is recommended that you complete the identity sticker as even if your pet is unlikely to get lost, it may decide to lose its collar! To apply identity label, please refer to (Fig 5). We recommend the use of a fabric collar without metal components (name discs etc.). Check that the pet's collar is not too tight nor too loose. (The collar should be free to pass over the pet's head.) Ideally the magnet should hang so that the bottom of the magnet is level with the outside edge of the pet door as the pet approaches from the outside. (See Figs. 1 and 2.) If the pet's magnet is not level with the outside edge of the pet door your pet may experience difficulty gaining entry as it will not readily be able to bring its magnet sufficiently close (within 40mm (1.5")) to the detector. Please note that although this pet door may be used for both cats and small dogs, separate cat and dog magnets are required. Product performance may be affected if an incorrect magnet type is used. Both cat magnets and dog magnets may be purchased from your retailer or by calling the Pet Mate Helpline. Please quote the following barcodes when purchasing new magnets for this product.

Cat Mate cat collar magnets:  
barcode number 0 35368 70257 0

Dog Mate dog collar magnets:  
barcode number 0 35368 70258 7

**Note. Only Cat Mate cat magnets as depicted in Fig. 5 will operate this product.**

## 4. Training Your Pet

If your pet has never used a pet door before, you will probably need to entice it through with its meals to begin with. Some pets may initially be nervous of the 'click' produced on operation of the electromagnetic catch. In such cases you may prefer to get your pet used to the operation of the flap without the

electromagnetic catch. To do this, simply remove the battery and securely tape down the two locking arms, until your pet is familiar with its operation.

**Please note that we do not recommend that pets and particularly kittens/puppies are left alone to use a pet door without first ensuring that they are completely familiar with its operation.**

## 5. Troubleshooting

If the electromagnetic catch does not appear to function correctly please check the following:

- New battery is fitted.
- The collar is attached in the correct orientation, with the magnet's arrow and label facing forwards (see fig 4).
- All pets using the pet door are wearing the correct cat magnets (see fig 5) and dogs are wearing dog magnets.
- Place the pet's collar around four fingers of your hand as shown in Fig. 3, so that the magnet is approximately 100mm - 125mm (4" - 5") back from your fingertips.

Move towards the flap with the bottom of the magnet level with the detector. When the magnet is within about 40mm (1.5") of the detector the electromagnetic catch should be activated enabling you to push open the flap with your fingertips.

If the electromagnetic catch operates correctly when tested as above, try to observe why the pet is not succeeding, e.g. is the pet not wearing its collar correctly? Is the pet door installed at the correct height?

In the unlikely event of the electromagnetic catch assembly proving to be faulty please note that the catch assembly may be removed and returned for replacement, thus avoiding the need to remove the pet door entirely. To do this remove the battery cover and disconnect battery. Unscrew the two retaining screws for the catch assembly, then depress catch while pulling forward until assembly is fully removed.

**If you still have a problem, please contact the PET MATE Helpline.**

## GUARANTEE

Pet Mate Ltd. guarantee your product for a period of 3 years from the date of purchase, subject to proof of purchase date. The guarantee is limited to any defect arising due to faulty materials or manufacture. Any defective item will be repaired or replaced free of charge at the manufacturer's discretion, provided that the defect has not been caused by neglect, misuse or normal wear and tear. Your statutory rights are not affected. Note: This pet door is not guaranteed to keep out racoons.