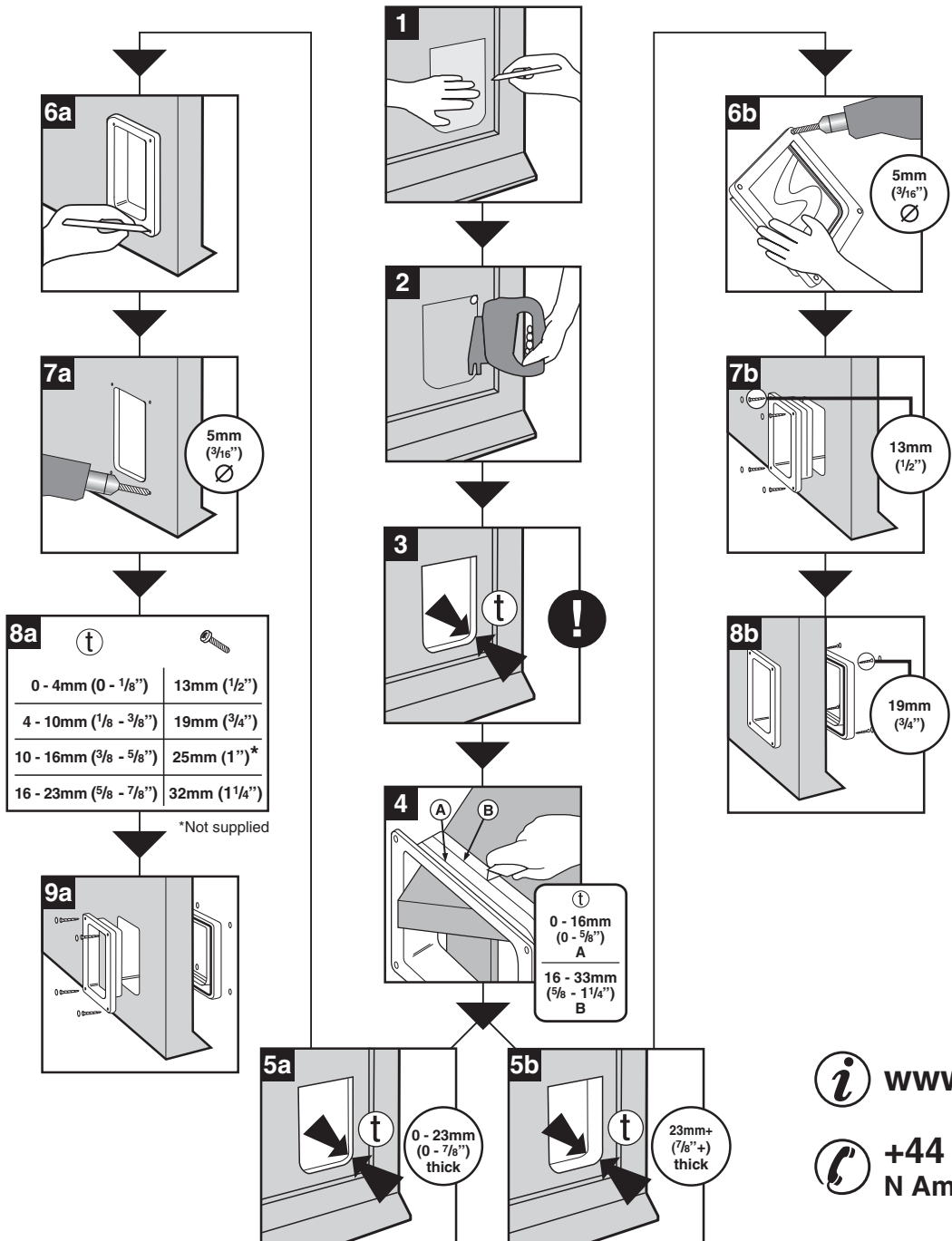


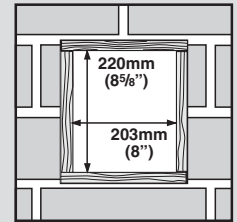
# TEMPLATE

ⓓ SCHABLONE ⓕ GABARIT ⓔ PLANTILLA ⓃL SJABLOON



## WALL INSTALLATION

Make a suitably sized hole in wall and line it with 19mm (3/4") plywood or similar material to take screws. See illustration. (We recommend the bottom of the hole is approximately level with your pet's stomach.)



After constructing tunnel, proceed to step 6b.

[www.pet-mate.com](http://www.pet-mate.com)

+44 (0)1932 700 001  
N America (936) 760 4333

# FITTING INSTRUCTIONS

## **CAT MATE** Large Cat Flap (Ref 221) and **DOG MATE** Small Dog Door (Ref 221D)

### Refer to Template

- 1 Place template in desired position on door and draw round it. (We recommend the bottom of the hole is approximately level with your pet's stomach.)
- 2 Use an electric jig-saw to cut along inside of drawn line. Be careful to cut hole square to the door, particularly with thicker doors. Ensure frames are free-fitting in hole.
- 3 Determine thickness of door panel (t).
- 4 If necessary, cut interior frame (frame without swinging flap) to correct length with sharp knife. Keep hands clear of blade and support inside of moulding with a suitable piece of wood.

---

### 5a For door panels 0 - 23mm (0 - 7/8") thick

- 6a Position interior frame on inside of door and mark four screw positions.
- 7a Remove frame and drill screw clearance holes in panel to approximately 5mm (3/16") diameter.
- 8a Select appropriate screws.
- 9a Position exterior frame on outside of door. Screw interior frame to it by using appropriate screw for panel thickness (t) (see Fig. 8a). Finally, fit screw caps.

---

### 5b For door panels 23mm+ (7/8"+) thick

- 6b Drill out four screw holes in exterior frame to allow close clearance on screws. (Recommended drill 5mm (3/16") diameter).
- 7b Screw interior frame on inside of door, using short 13mm (1/2") screws.
- 8b Screw exterior frame on outside of door using 19mm (3/4") screws. Finally, fit screw caps.

### Wall installation

Make a suitably sized hole in wall and line it with 19mm (3/4") plywood or similar material to take screws. See illustration. (We recommend the bottom of the hole is approximately level with your pet's stomach). After constructing tunnel, proceed to step 6b.

### A helpful tip...

To train your pet to use the cat flap, prop it open at first and use food as an encouragement.



Pet Mate Ltd. guarantee your product for a period of 3 years from the date of purchase, subject to the registration of your purchase details on our website [www.pet-mate.com](http://www.pet-mate.com) within 14 days of purchase. (If you do not have access to a computer, please send details of your purchase with copy of receipt along with your name and address.) In the event of a fault developing contact Pet Mate customer services for a returns authorisation number. The guarantee is limited to any defect arising due to faulty materials or manufacture. Any defective item will be repaired or replaced free of charge at the manufacturer's discretion, provided that the defect has not been caused by neglect, misuse or normal wear and tear. Your statutory rights are not affected.