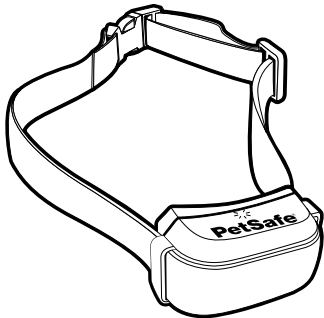




protect. teach. love.®

Product Manual

PIG00-11116
YardMax® Rechargeable
In-Ground Fence™
Receiver Collar



Please read this entire manual before beginning

Welcome

You and your pet were made for each other. Our aim is to help you have the best companionship and the most memorable moments together. Your YardMax® Rechargeable In-Ground Fence™ receiver collar is designed to give your pet more yard space while keeping him safe.

We know that safe pets make happy owners. Before getting started, please take a moment to read through the important safety information. If you have any questions, please don't hesitate to contact us.

Hereinafter Radio Systems Corporation, Radio Systems PetSafe Europe Ltd., Radio Systems Australia Pty Ltd. and any other affiliate or brand of Radio Systems Corporation may be referred to collectively as "We" or "Us."

Important Safety Information

Explanation of attention words and symbols used in this manual.



This is the safety alert symbol. It is used to alert you to potential personal injury hazards. Obey all safety messages that follow this symbol to avoid possible injury or death.

⚠ WARNING

WARNING indicates a hazardous situation which, if not avoided, could result in death or serious injury.

⚠ CAUTION

CAUTION, used with the safety alert symbol, indicates a hazardous situation which, if not avoided, could result in minor or moderate injury.

CAUTION

CAUTION, used without the safety alert symbol, indicates a hazardous situation which, if not avoided, could result in harm to your pet.

NOTICE

NOTICE is used to address practices not related to personal injury.

⚠ WARNING

- Not for use with aggressive pets. Do not use this product if your pet is prone to aggressive behavior. Aggressive pets can cause severe injury or death to their owners and others. If you are not sure that this product is right for your pet, please talk to your veterinarian or a certified trainer.
- The battery should be charged in areas with temperatures ranging from 32°F to 113°F / 0°C to 45°C. Recharging the battery outside of this temperature range can cause the battery to overheat, explode or catch fire.

⚠ CAUTION

- This system is NOT a solid barrier. It is designed to act as a deterrent to remind pets to remain within the established boundary by use of static correction. It is important that you reinforce training with your pet on a regular basis. Since the tolerance level to static correction varies from pet to pet, Radio Systems Corporation CANNOT guarantee that the system will, in all cases, keep a pet within the established boundary. Not all pets can be trained to avoid crossing the boundary! Therefore, if you have reason to believe that your pet may pose a danger to others or harm himself if he is not kept from crossing the boundary, you should NOT rely solely upon this system to confine your pet. Radio Systems Corporation shall NOT be liable for any property damage, economic loss or any consequential damages sustained as a result of any animal crossing the boundary.
- Keep away from children

CAUTION

Proper fit of the receiver collar is important. A receiver collar worn for too long or made too tight on your pet's neck may cause skin damage, ranging from redness to pressure ulcers. This condition is commonly known as bed sores.

- **Avoid leaving the receiver collar on your pet for more than 12 hours per day.**
- When possible reposition the collar on your pet's neck every 1 to 2 hours.
- Check the fit to prevent excessive pressure; follow the instructions in this manual.
- Regularly recheck the fit to prevent excessive pressure; follow the instructions in this manual.
- You may need to trim the hair in the area of the contact points. Never shave your pet's neck; this may lead to a rash or infection.
- Never connect a leash to a collar with contact points. It will cause excessive pressure on the contact points.
- When using a separate collar for a leash, do not put pressure on the receiver collar.
- Wash your pet's neck area and the contact points of the receiver collar weekly with a damp cloth.
- Examine the contact area daily for signs of a rash or a sore.
- If a rash or sore is found, discontinue use of the receiver collar until the skin has healed.
- If the condition persists beyond 48 hours, see your veterinarian.
- For additional information on bed sores and pressure necrosis, please visit our website.

CAUTION

- Proper training of your pet is essential to successfully using the system. During the first 2 weeks of training, do not use the system without direct supervision of your pet.
- The receiver collar should not be on your pet when the system is tested. If it is, your pet may receive an unintended correction.
- Do not change the transmitter setting from Traditional mode (B) to YardMax® mode (A) without verifying that the receiver collar will still contain your pet.
- If the receiver collar fails the ReadyTest® startup, the receiver collar is automatically turned off. Your pet will not be contained.
- Always remove your pet's receiver collar before performing any fence transmitter testing. This will prevent unintended corrections.
- The boundary width of the system must be tested whenever an adjustment is made to the pet area to prevent unintended corrections to your pet.
- To prevent an unintended correction, after the boundary flags have been placed, be sure to set the static correction on the receiver collar back to level 1, which is tone only.
- Remove the receiver collar from your pet when indoors for the comfort of your pet.

NOTICE

- You should expect hundreds of recharge cycles from your battery; however, do not charge your receiver collar every night. Charging too often can reduce battery life.
- Charge your receiver collar when the receiver indicator light blinks red.

How the System Works

The system works by sending a radio signal through a buried wire (boundary wire). Your pet wears a receiver collar that picks up the signal. It warns your pet with a beep when he or she enters the warning zone. If your pet continues to venture out, the collar will issue a safe but startling correction, similar to the static you feel if you drag your feet across a carpet and then touch a door handle. Of course, different pets respond to different levels of correction. We have built in 5 levels of correction plus a tone-only setting to accommodate any pet. The only pets that we do not recommend the system for are aggressive pets and pets below 6 months of age or under 5 lb.

NOTICE

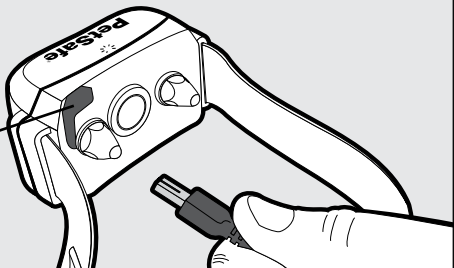
- Charge your receiver collar when the receiver indicator light blinks red. Do not charge your receiver collar every night. Charging too often can reduce battery life.

Step 1: Charge the Receiver Collar

The receiver charger has two jacks that allow you to charge two receiver collars at the same time. Open the rubber cap on the back of the receiver collar (**1A**). Plug one end of the charger into the outlet and the other into the receiver collar. The collar light is red while charging and green when fully charged. The first charge will take about 2 or 3 hours. Each charge can last up to 3 months depending on the frequency of use.

1A

Receiver
Charge Jack

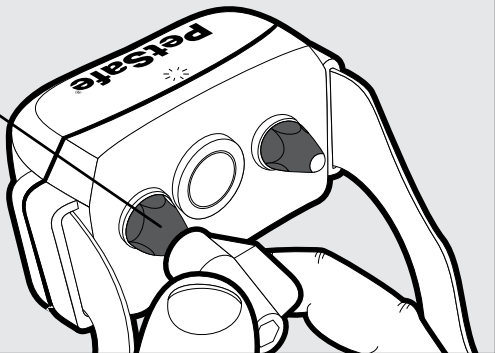


Step 2: Prepare the Receiver Collar

Your receiver collar comes installed with short contact points. If your pet has long or thick hair, use the long contact points instead. Tighten or switch the contact points by using the contact point wrench (2A).

2A

Contact
Point



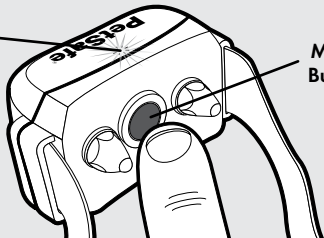
Turn On the Receiver Collar

The collar will automatically turn on whenever it is removed from the charger. To turn on the receiver collar when it is not on the charger, press and hold the mode button for 1 second **(2B)**. Avoid touching the metal contact points.

Next, the indicator light will flash green once and then go off for 1 second. It will then come back on and glow continuously for 5 seconds—either solid red, solid green, or red+green together to indicate the status of the battery **(2B)**. Finally, there will be a series of red flashes which represent the static correction level. This quick, opening series of tests is part of the ReadyTest® startup feature. The receiver collar will then automatically start the PerfectFit test by flashing red+green together every second for 90 seconds.

2B

Indicator
Light



Mode
Button

CAUTION

If the receiver collar fails the ReadyTest[®] startup, the receiver collar is automatically turned off; your pet will not be contained.

ReadyTest Feature

ReadyTest is a startup feature that lets you know the status of the battery as well as the current correction level of the receiver collar. It also checks that all circuits are working correctly. This mode automatically starts every time you remove the receiver collar from the charger, or first turn it on. If the receiver collar is on your pet during the ReadyTest startup, the test will fail and the receiver collar will automatically turn off. This also means the system will not contain your pet!

If the ReadyTest feature does detect a problem, the receiver collar will continually beep and the indicator light will glow solid red for 20 seconds. The receiver collar will automatically turn off. Do not put the receiver collar on your pet at this time; your pet will not be contained. Instead, turn the receiver collar back on and repeat the test. If the receiver collar continues to fail the ReadyTest startup, call the Customer Care Center.

PerfectFit Test

This test is an added feature to verify a “perfect” fit of the collar around your pet’s neck; however, it is not required for the system to function. After the ReadyTest® status finishes with the series of red flashes that correspond to the static correction, the receiver collar will automatically start the PerfectFit mode. For 90 seconds the receiver collar will continually flash red+green together. You must place the receiver collar on your pet and adjust the fit within the 90 seconds or it will go back to normal operation mode and flash the status of the battery (red, green, or red+green together) every 4 seconds.

After you adjust the collar on your pet and the contact points are touching his or her skin (or if you inadvertently touch both of the contact points with your fingers), the receiver collar will emit a unique double tone. You will know you have the proper fit after you hear 5 consecutive double tones and you see 5 green flashes. Then the receiver collar moves into normal operation mode and flashes the status of the battery every 4 seconds.

Turn Off the Receiver Collar

To turn off the receiver collar, press and hold the mode button continuously for 5 seconds until the red light turns off. To extend the time between charging the receiver collar, consider turning off the receiver collar when it is not in use.

Set the Static Correction Level

The static correction levels increase in strength from 2 to 6, with level 1 being tone only (no correction), and level 6 being the maximum setting. Refer to the table on the following page to choose the static correction that best fits your pet.

To set or check the static correction, press and hold the mode button until you see a red light. Then let go. The collar will then emit a series of red flashes that correspond to the current correction level (e.g., 4 red flashes means level 4). Press and hold the mode button again for 1 second to increase the level by one setting. You must count the number of red flashes to determine the level setting.

Note: *Once you count 6 red flashes you are at level 6, and an additional hold will cycle the receiver collar back to level 1, which is tone only.*

Refer to the table “Receiver Collar Status Indicators” on page 21 for a complete guide to all the status lights and tones for the receiver collar.

Static Correction Level Table

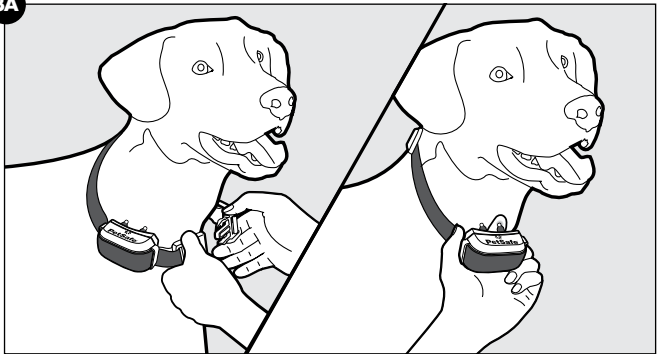
| Level | Indicator Light | Static Correction |
|-------|-----------------|-------------------|
| 1 | 1 red flash | None—tone only |
| 2 | 2 red flashes | Low |
| 3 | 3 red flashes | Medium-low |
| 4 | 4 red flashes | Medium |
| 5 | 5 red flashes | Medium-high |
| 6 | 6 red flashes | High |

Step 3: Fit the Receiver Collar

Important: *The proper fit and placement of your receiver collar is important for effective training. The contact points must have direct contact with your pet's skin on the underside of his neck. See the important safety information on pages 5 and 6.*

1. Be sure the receiver collar is off before placing it on your pet. Then with your pet standing, fit the receiver collar snugly onto your pet's neck so that the contact points make contact with your pet's skin on the underside of his or her neck. Make sure the PetSafe® logo is right-side up (**3A**).

3A



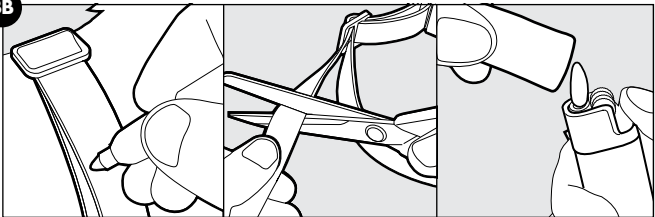
CAUTION

You may need to trim the hair in the area of the contact points. Never shave your pet's neck; this may lead to a rash or infection.

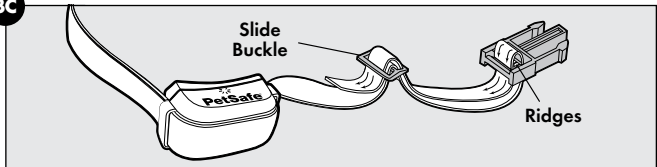
2. Check the tightness of the receiver collar by inserting one finger between the end of a contact point and your pet's neck. The fit should be snug but not constricting.
3. Allow your pet to wear the receiver collar for a few minutes, then check it again.
4. Once you are satisfied with the fit of the receiver collar, remove it from your pet and trim it, but make sure to allow room for growth or a thicker winter coat. Use a lighter to seal the cut so that it will not fray (**3B**).
5. The collar will slip if it is not properly threaded. The slide buckle prevents the collar from becoming loose around your pet's neck and the ridges must be facing up (**3C**).
6. While the receiver collar is still off your pet, turn it on by holding the mode button until a green light comes on. The first thing your receiver collar does is a ReadyTest[®] startup (page 11) to ensure that it is ready for use. You will know it is done when the indicator flashes the series of red flashes to indicate the current static correction level. Do not touch the contact points during the ReadyTest startup.
7. Once the ReadyTest startup is done, the receiver collar will automatically go through an optional PerfectFit Test (page 12), which lasts for 90 seconds. This mode begins with simultaneous flashing red+ green lights.
8. Place the collar on your pet and adjust the fit.

- The receiver collar will emit a unique double tone as the contact points touch your pet's skin. You will know that you have the proper fit when you hear the receiver collar emit the double tone and it flashes green 5 consecutive times.
- After 90 seconds, the receiver collar moves into normal operation mode. If you do not hear the 5 consecutive double tone, tighten the collar and repeat the PerfectFit Test.

3B



3C



Taking Your Pet Out of the Pet Area

Important: *Remove the receiver collar and leave it at home.*

Once your pet learns the boundary, he will be reluctant to cross it for walks or car rides.

Option 1:

Replace the receiver collar with a regular collar. Put your pet in a car that is within the pet area and drive him out of the pet area.

Option 2:

Replace the receiver collar with a regular collar and leash. Walk your pet out of the pet area while giving a command such as "OK" at a specific place along the boundary (the end of your driveway, sidewalk, etc.). Always leave the pet area from the same spot in your yard with a leash and your pet will associate leaving the pet area only on a leash, only at this spot, and only with a person. You may initially need to convince your pet to leave the pet area with a treat and lots of praise.

Note: *You may also carry your pet out of the pet area.*

Advanced Features

Anti-Linger Prevention

The Anti-Linger Prevention feature keeps your pet from staying in the warning zone for long periods of time and draining the receiver collar's rechargeable battery. Your pet will hear a 2-second warning tone when he reaches the warning zone. If your pet does not return to the pet area after 2 seconds, he will receive a continuous static correction until he returns to the pet area or until the Over Correction Protection feature is enabled.

Run Through Prevention

This system includes a unique Run Through Prevention feature so that your pet cannot "run through" the pet area without receiving an increased level of static correction.

YardMax® Mode

When your pet crosses over the wire and passes the warning zone, static correction is activated at a variable distance dependent on the height of your pet and the height of the receiver activation distance setting. The ideal warning zone distance is where the receiver collar activates between 1 to 1½ ft. above your pet's neck height.

If you have a very timid pet, you may increase the warning zone distance to allow more distance before the higher level, run through prevention static correction is generated. You can accomplish this by increasing the height of the receiver collar activation.

Traditional Mode

The receiver collar automatically increases the static correction when your pet continues more than 20% of the way through the boundary width.

For example, if the signal is detected 10 ft. from the wire and your pet enters the static correction zone, this feature is activated when he is approximately 8 ft. from the boundary wire. Your pet will then receive a static correction that is at an increased level corresponding to the static correction level setting on the receiver collar.

Over Correction Protection

Over Correction Protection is designed to protect your pet from prolonged static correction if he “freezes” in the static correction zone or runs beyond the boundary.

YardMax® Mode (A)

In the unlikely event that your pet “freezes” or continues beyond the boundary, the static correction duration continues for 15 seconds. The receiver collar locks out further static correction and the green light will remain on for 10 seconds. The receiver collar remains locked out until your pet re-enters the pet area.

Traditional Mode (B)

In the unlikely event that your pet “freezes” in the static correction zone, this feature limits the static correction duration to 15 seconds. While the receiver collar locks out further static correction, the green light will remain on for 10 seconds. The receiver collar remains locked out until your pet leaves the static correction zone.

Receiver Collar Status Indicators

The receiver collar light and with the alarm tones are used to determine the operational mode, the battery status and the correction level. Refer to the receiver collar status table to understand the status lights and tones for the receiver collar. During normal operation, the receiver collar light will flash every 4 seconds to indicate the battery status as shown in the table below. If your receiver collar has not been moved for at least 20 seconds, the battery status light will function, but the receiver collar will enter sleep mode to conserve battery life. To wake up the receiver collar simply pick it up and flip it over or shake it.

Receiver Collar Status Table

| Light Status | Alarm Tone | Condition |
|--|------------|---|
| While Plugged into the Receiver Charger | | |
| Solid red | No tone | Charge in progress |
| Solid green | No tone | Charge complete |
| No light | No Tone | Charge failure—contact Customer Care Center |

| Light Status | Alarm Tone | Condition |
|--|------------|--|
| <p align="center">ReadyTest® Startup (After removing the receiver collar from the charger or after first turning it on)</p> | | |
| Off for 1 second | No tone | Unit is starting the ReadyTest startup feature |
| Continuous red, green, or red+green together (5 seconds) | No tone | Battery charge status |
| Flashing red from 1 to 6 times | No tone | Receiver collar is reporting the static correction level from 1 to 6 |
| Continuous red | 20 seconds | ReadyTest failure; Unit is not operational—contact Customer Care Center |

| Light Status | Alarm Tone | Condition |
|---|--|--|
| PerfectFit Test | | |
| Flashing red+green together (every 1 second) | No tone | Unit is in PerfectFit mode for 90 seconds after the Readytest startup is completed |
| Flashing green (every 1 second) | 5 consecutive double tones for a confirmed fit | PerfectFit mode indicates that the collar is making true contact with the pet's skin |
| Static Correction Level | | |
| Flashing red from 1 to 6 times | No tone | Receiver collar is reporting the static correction level from 1 to 6 |

| Light Status | Alarm Tone | Condition |
|--|----------------------------|---|
| Receiver Activation Status | | |
| Fast pulsating green | Warning tone | Warning tone |
| Fast pulsating red | Duration of the correction | Static correction is being delivered (up to 15 seconds) |
| Continuous green (10 seconds) | No tone | Over Correction Protection feature; Collar is locked for 10 seconds |
| Slow blinking green (every 4 seconds) | No tone | Collar battery charge 100%-60% |
| Slow blinking red+green together (every 4 seconds) | No tone | Collar battery charge 60%-20% |
| Slow blinking red (every 4 seconds) | No tone | Collar battery charge 20% or less; Charge immediately |

Troubleshooting

The receiver collar is not beeping or correcting.

- Make sure the receiver collar is turned on, and the battery status lights are flashing every 4 seconds.
- Charge the receiver collar and go through the ReadyTest® startup and PerfectFit diagnostic tests.
- Check that the fence transmitter power is turned on and the transmitter status light is solid green. If not, refer to the YardMax® Rechargeable In-Ground Fence™ manual.
- In YardMax mode (A), excessive snowfall (>1½ ft.) may place your pet outside the signal field. You may need to switch to Traditional mode (B) or increase the boundary width until the snow recedes.

| | |
|--|--|
| The receiver collar is beeping, but the pet is not responding to the static correction. | <ul style="list-style-type: none">• Make sure the static correction level is set at 2 or above.• Test the receiver collar with the test light by walking toward the boundary wire. If the test light flashes, adjust the fit of the receiver collar using the PerfectFit feature.• Trim your pet's fur where the contact points touch the neck or use the long contact points.• Increase the static correction level.• Repeat the training steps in order to reinforce the training. |
| Receiver collar is not charging. | <ul style="list-style-type: none">• Check that the charger is properly seated into the receiver collar jack.• If the indicator light on the receiver collar still does not glow red when connected to charger, there is a problem with the charger. If the indicator light glows red when placed on the charger but goes out after disconnecting the receiver collar without performing the ReadyTest[®] startup there is a problem with the receiver collar. Call the Customer Care Center. |

The receiver collar has injured my pet's neck.

- Failing to follow the important safety information at the front of the manual has caused pressure ulcers. Some descriptions of advanced pressure ulcers describe the sores as looking like burns on the pet's neck. Be assured that electronic collars do not use enough energy to create electrical burns. The energy in an output pulse is only a few thousandths of a Joule; it is similar in nature to the static pulse that you may feel when getting out of your car. In some cases, pressure ulcers are described as chemical burns. The battery in your receiver collar is sealed; in addition, your collar's housing is also sealed. This redundant sealing makes it virtually impossible, without misuse or abuse, for your receiver collar battery to leak onto your pet's neck. Please review and follow the important safety information starting on page 3 and the instructions in Step 3 under the heading "Fit the Receiver Collar" on page 15.

Terms of Use and Limitation of Liability

1. Terms of Use

This Product is offered to you conditioned upon your acceptance without modification of the terms, conditions and notices contained herein. Usage of this Product implies acceptance of all such terms, conditions, and notices.

2. Proper Use

This Product is designed for use with pets where training is desired. The specific temperament of your pet may not work with this Product. If you are unsure whether this is appropriate for your pet, please consult your veterinarian or certified trainer.

3. No Unlawful or Prohibited Use

This Product is designed for use with pets only. This pet training device is not intended to harm, injure or provoke. Using this Product in a way that is not intended could result in violation of Federal, State or local laws.

4. Limitation of Liability

In no event shall Radio Systems Corporation be liable for any direct, indirect, punitive, incidental, special or consequential damages, or any damages whatsoever arising out of or connected with the use or misuse of this Product. Buyer assumes all risks and liability from the use of this Product.

5. Modification of Terms and Conditions

Radio Systems Corporation reserves the right to change the terms, conditions and notices under which this Product is offered.

Compliance

FCC: USA

This device complies with part 15 of the FCC Rules. Operation is subject to the following two conditions: (1) This device may not cause harmful interference, and (2) this device must accept any interference received, including interference that may cause undesired operation.

NOTE: This equipment has been tested and found to comply with the limits for a Class B digital device, pursuant to part 15 of the FCC Rules. These limits are designed to provide reasonable protection against harmful interference in a residential installation. This equipment generates, uses, and can radiate radio frequency energy and, if not installed and used in accordance with the instructions, may cause harmful interference to radio communications. However, there is no guarantee that interference will not occur in a specific installation. If interference does occur to radio or television reception, which can be determined by turning the equipment off and on, the user is encouraged to try to correct the interference by one or more of the following measures:

- Reorient or relocate the receiving antenna.
- Increase the separation between the equipment and the receiver.
- Connect the equipment to an outlet on a circuit different from that to which the receiver is connected.
- Consult customer care, the dealer, or an experienced radio/TV technician for help.

CAUTION: Modification or changes to this equipment not expressly approved by Radio Systems Corporation may void the user's authority to operate the equipment.

IC: Canada

This device complies with Industry Canada license-exempt RSS standard(s). Operation is subject to the following two conditions: (1) this device may not cause interference, and (2) this device must accept any interference, including interference that may cause undesired operation of the device.

Le présent appareil est conforme aux CNR d'Industrie Canada applicables aux appareils radio exempts de licence. L'exploitation est autorisée aux deux conditions suivantes : (1) l'appareil ne doit pas produire de brouillage, et (2) l'utilisateur de l'appareil doit accepter tout brouillage radioélectrique subi, même si le brouillage est susceptible d'en compromettre le fonctionnement.

Customer Care International

USA & Canada—Tel: +1 (800) 732-2677

Monday–Friday 8 AM – 8 PM / Saturday 9 AM – 5 PM

Australia—Tel: +1 (800) 786-608

Monday–Friday 8:30 AM – 5 PM

New Zealand—Tel: +0 (800) 543-054

Monday–Friday 10:30 AM – 7 PM



Battery Disposal

Separate collection of spent batteries is required in many regions; check the regulations in your area before discarding spent batteries. At the end of the product life, please contact our Customer Care Center to receive instructions on proper disposal of the unit. Please do not dispose of the unit in household or municipal waste. For a listing of Customer Care Center telephone numbers in your area, visit our website at www.petsafe.com.

Warranty

One Year Non-Transferable Limited Warranty

This Product has the benefit of a limited manufacturer's warranty. Complete details of the warranty applicable to this Product and its terms can be found at www.petsafe.net and/ or are available by contacting your local Customer Care Center.

United States and Canada—Radio Systems Corporation, 10427 PetSafe Way, Knoxville, TN 37932 USA

Europe—Radio Systems PetSafe Europe Ltd., 2nd Floor, Elgee Building, Market Square, Dundalk, Co. Louth, A91 YR9X Ireland

Australia/New Zealand—In compliance with the Australian Consumer Law, Warranties Against Defects, effective January 1, 2012, warranty details of this Product are as follows:

One Year Non-Transferable Limited Warranty

What is covered: Radio Systems Australia Pty Ltd (hereinafter referred to as "Radio Systems") warrants to the original retail purchaser, and not any other purchaser or subsequent owner, that its Product, when subject to normal and proper residential use, will be free from defects in material or workmanship for a period of one (1) year from the purchase date. An "original retail consumer purchaser" is a person or entity who originally purchases the Product, or a gift

recipient of a new Product that is unopened and in its original packaging. When serviced by Radio Systems Customer Service, Radio Systems covers labor and parts for one year of ownership; after the first year, a service or upgrade charge will apply relative to replacement of the Product with new or refurbished items at Radio Systems' sole discretion.

The limited warranty is non-transferable and shall automatically terminate if the original retail consumer purchaser resells the Radio Systems Product or transfers the property on which the Radio Systems Product is installed. This Limited Warranty excludes accidental damage due to dog chews; lightning damage; or neglect, alteration and misuse. Consumers who purchase products outside of Australia, New Zealand or from an unauthorised dealer will need to return the Product to the original place of purchase for any warranty issues.

Please note that Radio Systems does not provide refunds, replacements or upgrades for change of mind, or for any other reason outside of these Warranty terms.

Claims Procedure: Any claim made under this Warranty should be made directly to Radio Systems Australia Pty Ltd Customer Care Centre at:

Radio Systems Australia Pty Ltd., PO Box 7266, Gold Coast Mail Centre
QLD 9726, Australia

Australia Residents: 1800 786 608

New Zealand Residents: 0800 543 054

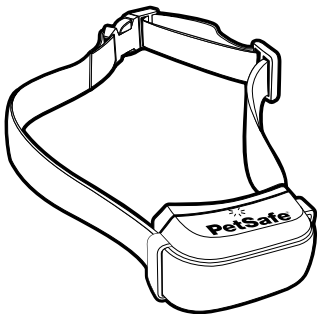
Email: aus-info@petsafe.net

To file a claim, a proof of purchase must be provided. Without a proof of purchase, Radio Systems will not repair or replace faulty components. Radio Systems requests the Consumer to contact the Radio Systems Customer Care Centre to obtain a Warranty Return number, prior to sending the Product. Failure to do so may delay in the repair or replacement of the Product.

If the Product is deemed to be faulty within 30 days from date of original purchase, Radio Systems will organize for a replacement to be sent in advance of returning the faulty Product. A Post Bag will be included with the replacement Product for the return of the faulty Product. The Product must be returned within 7 days of receiving the replacement. If the Product is deemed to be faulty after 30 days from the date of original purchase, the consumer will be required to return the Product to Radio Systems at the consumer's own expense. Radio Systems will test and replace the faulty unit or its components and return to the consumer free of charge provided the Product is within its said warranty period. This warranty is in addition to other rights and remedies available to you under the law. Radio

Systems goods come with guarantees that cannot be excluded under the Australia Consumer Law. You are entitled to a replacement or refund for a major failure and for compensation for any other reasonably foreseeable loss or damage. You are also entitled to have the goods repaired or replaced if the goods fail to be of acceptable quality and the failure does not amount to a major failure.

Should you have any queries or require any further information, please contact our Customer Care Centre on 1800 786 608 (Australia) or 0800 543 054 (New Zealand).



Radio Systems Corporation
10427 PetSafe Way
Knoxville, TN 37932

+1 (800) 732-2677

petsafe.com

For a list of patents protecting this product, please visit
www.radiosystemscorporation.com/patents

L400-003/1

©2017 Radio Systems Corporation