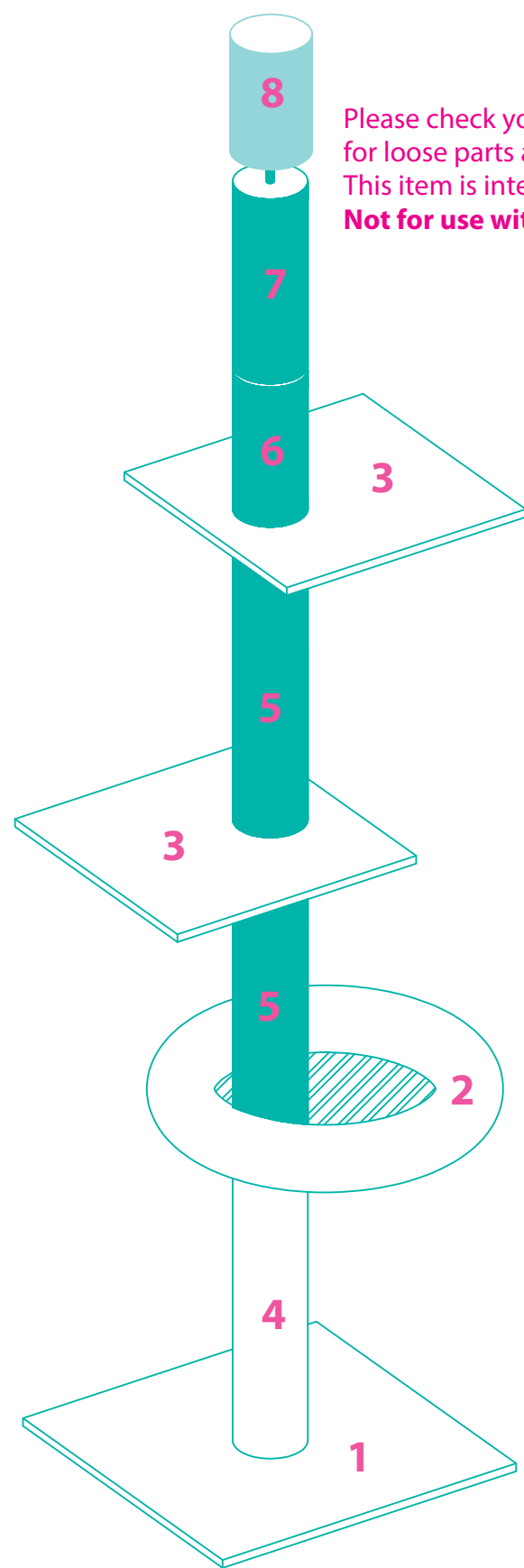


216mm

216mm

FULLY ASSEMBLED



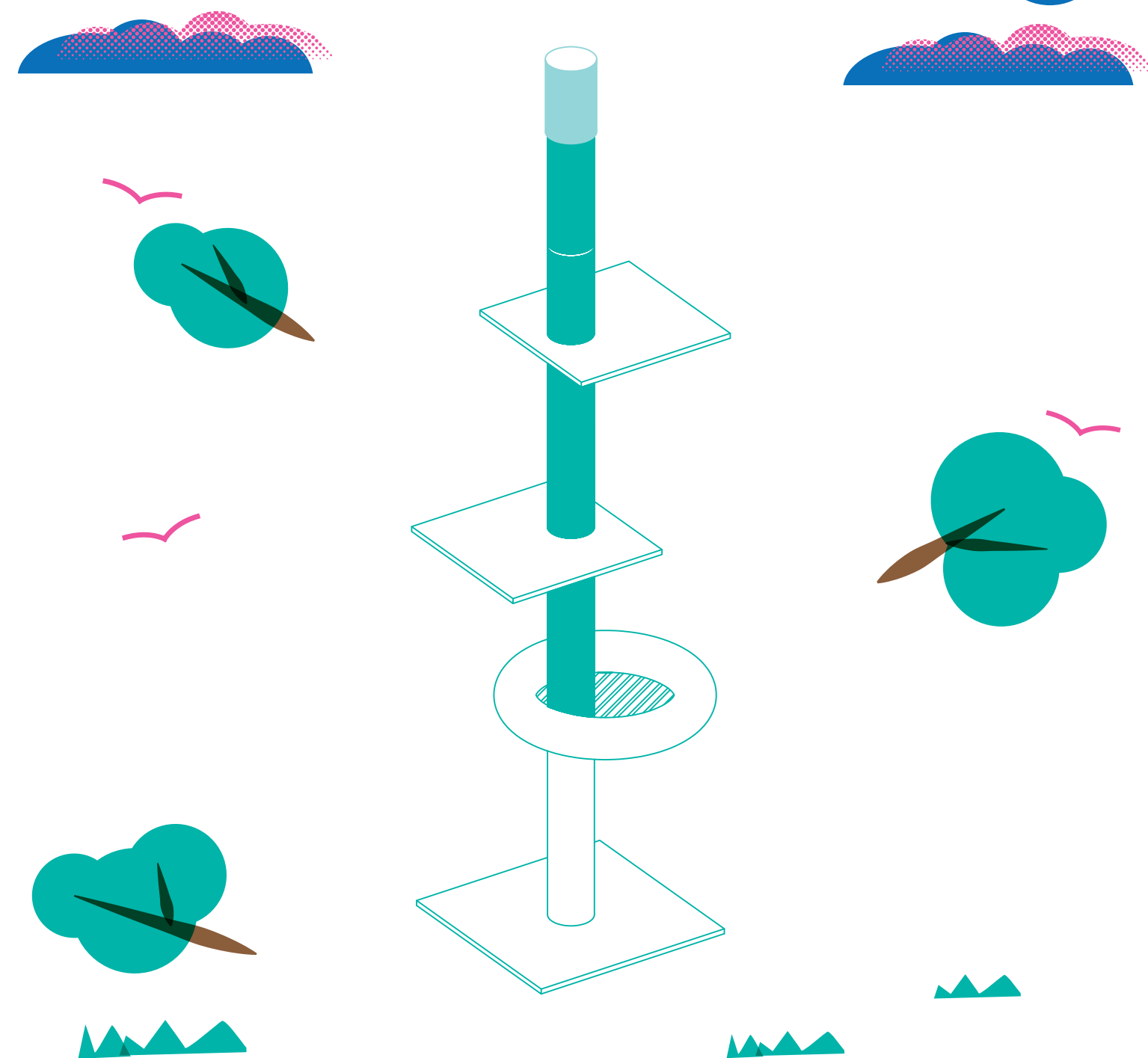
Please check your cat tower periodically for loose parts and re-tighten as needed. This item is intended to be secured to the ceiling only. **Not for use with vaulted/cathedral ceilings.**

Questions? Call our customer service 1-800-672-4399

280mm



88-106 IN HEIGHT



SKU# 214389
 OVERALL DIMENSIONS
 23.62 in L x 23.62 in W x 88 in - 106 in H
 60 cm L x 60 cm W x 223.5 cm - 269 cm H
 BASEBOARD DIMENSIONS
 23.62 in L x 23.62 in W
 60 cm L x 60 cm W

CAT TREE

INSTRUCTION MANUAL

WARNINGS & CAUTIONS

PLEASE READ FOLLOW ALL WARNINGS AND INSTRUCTIONS TO AVOID PET INJURY OR PROPERTY DAMAGES.

- This item is intended to be secured to the ceiling and not stand alone.
- If you utilize a step / stool when assembling, please do so cautiously.
- Keep all tools and instructions in a safe place for future reference.
- Follow the instructions carefully and make sure you've completed each step.
- This cat tree is intended for cat use only, please keep children away.
- Keep all small parts away from children / pets to avoid choking hazards.
- Never climb, rock, shake, step or hang on the cat tree.
- Place your cat tree indoors, away from direct sunlight or damp areas.
- Cat trees should be placed on a flat, level surface for stability.
- Check your cat tree often for loose screws or parts that might need re-tightening.
- If your cat tree gets torn or damaged, please discard it.
- The product photo may vary slightly from your fully assembled cat tree as this product is continually being enhanced.

CLEANING INSTRUCTIONS

Spot clean stains and vacuum fur (using small handheld or attachment) when necessary.

COMPONENTS

Prior to assembly, be sure to identify and sort all components shown below.

		A	10mm x 85mm	4PCS
		B	10mm x 40mm	1PC
		C	Wing Nut	2PCS
		D	22mm Spring Washer	2PCS
		E	30mm Washer	2PCS
			5mm Wrench	1PC

Questions? Call our customer service 1-800-672-4399

ASSEMBLY INSTRUCTIONS

STEP 1

STEP 2

STEP 3

STEP 4

STEP 5 Tighten and secure the rod to the top cap with the provided wing nut and washers.

Attach the other wing nut around the middle to allow for height adjustment in the step 6.

Since this is a large item, it is recommended you determine where you would like to place your tree before building and build nearby.

Option 1: Suitable for floor to ceiling height range from 88in - 97in

STEP 6 Twist the rod clockwise or counterclockwise to secure the assembly to best fit your ceiling height. Once adjusted, tighten and secure the bottom wing nut and washers. Give it a wiggle to assure the cat tree is secure to the ceiling firmly.

FINISHED ASSEMBLY Rotate perches and platforms as needed so your cat can easily access each tier.

Option 2: Suitable for floor to ceiling height range from 97in - 106in

STEP 6 Twist the rod clockwise or counterclockwise to secure the assembly to best fit your ceiling height. Once adjusted, tighten and secure the bottom wing nut and washers. Give it a wiggle to assure the cat tree is secure to the ceiling firmly.

FINISHED ASSEMBLY Rotate perches and platforms as needed so your cat can easily access each tier.

Questions? Call our customer service 1-800-672-4399