



**X-SERIES**

**OPERATING GUIDE FOR SD-1825X AND SD-1825XCAMO**  
PLEASE READ THIS ENTIRE GUIDE BEFORE BEGINNING

Hereinafter Radio Systems Corporation®, Radio Systems PetSafe Europe Ltd., Radio Systems Australia Pty Ltd. and any other affiliate or Brand of Radio Systems Corporation may be referred to collectively as “We” or “Us”.

**Thank you for choosing SportDOG Brand® training products. Used properly, this product will help you train your dog efficiently and safely. To ensure your satisfaction, please review this owner's manual thoroughly. If you have questions regarding this product's operation, please see this manual's Frequently Asked Questions or Troubleshooting sections, contact our Customer Care Center at 1-800-732-0144, visit our website at [www.sportdog.com](http://www.sportdog.com), or view our support videos at [www.youtube.com/sportdogbrand](http://www.youtube.com/sportdogbrand).**

To get the most protection out of your warranty, please register your product within 30 days at [www.sportdog.com](http://www.sportdog.com). By registering and keeping your receipt you will enjoy the product's full warranty and, should you ever need to call the Customer Care Center, we will be able to help you faster. Most importantly, your valuable information will never be given or sold to anyone. Complete warranty information is available online at [www.sportdog.com](http://www.sportdog.com).


## **OTHER IMPORTANT INFORMATION**

Use of this product implies acceptance of any and all terms, conditions, and notices related to this product including, but not limited to, those found in this Operating Guide and the Insert containing important Regulatory Compliance and Safety information.

---

## **TABLE OF CONTENTS**

<b>COMPONENTS</b> .....	<b>3</b>
<b>HOW THE SYSTEM WORKS</b> .....	<b>3</b>
<b>KEY DEFINITIONS</b> .....	<b>4</b>
<b>PREPARE THE REMOTE TRANSMITTER</b> .....	<b>5</b>
<b>PREPARE THE COLLAR RECEIVER</b> .....	<b>6</b>
<b>FIT THE COLLAR RECEIVER</b> .....	<b>8</b>
<b>FIND THE BEST INTENSITY LEVEL FOR YOUR DOG</b> .....	<b>8</b>
<b>CHANGING STATIC STIMULATION RANGES</b> .....	<b>9</b>
<b>GENERAL TRAINING TIPS</b> .....	<b>9</b>
<b>PROGRAM THE REMOTE TRANSMITTER</b> .....	<b>11</b>
<b>MATCH THE COLLAR RECEIVER AND REMOTE TRANSMITTER</b> .....	<b>12</b>
<b>PROGRAM THE SYSTEM FOR MULTI-DOG OPERATION</b> .....	<b>12</b>
<b>CHANGE ID CODES</b> .....	<b>14</b>
<b>ACCESSORIES</b> .....	<b>14</b>
<b>FREQUENTLY ASKED QUESTIONS</b> .....	<b>15</b>
<b>TROUBLESHOOTING</b> .....	<b>16</b>
<b>TEST LIGHT INSTRUCTIONS</b> .....	<b>16</b>
<b>BATTERY</b> .....	<b>17</b>

You  videos available at [www.youtube.com/sportdogbrand](http://www.youtube.com/sportdogbrand) or on each products' VIDEOS tab at [sportdog.com](http://sportdog.com).

# COMPONENTS

## YOUR SD-1825X OR SD-1825XCAMO SYSTEM INCLUDES THE FOLLOWING:

- Remote Transmitter
- Collar Receiver
- Charging Adaptor
- Charging Cradle
- Short/Long Contact Points
- Lanyard
- Belt Clip
- Test Light Tool
- Basic Training Manual

---

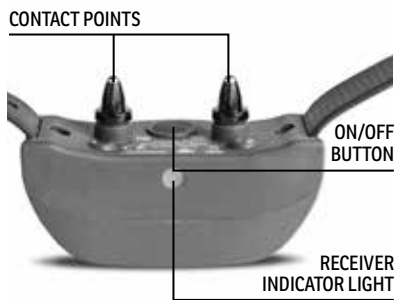
## HOW THE SYSTEM WORKS

Your SportDOG® Brand system has been proven safe, comfortable, and effective for all dogs over 8 pounds. Consistent, correct use of this product allows you to reinforce commands and correct misbehavior from one mile. The Remote Transmitter sends a signal, activating the Collar Receiver to deliver a harmless stimulation. With proper training, a dog will learn to associate this signal with a command. Like all SportDOG products, this model features adjustable static stimulation levels so you can tailor the stimulation level to your dog's temperament, eliminating the risk of over-correction.

**IMPORTANT: THE SPORHUNTER® 1825X AND THE WETLANDHUNTER® 1825X HAVE A RANGE OF ONE MILE. DEPENDING ON THE WAY YOU HOLD THE REMOTE TRANSMITTER, THE MAXIMUM RANGE MAY VARY. FOR CONSISTENT RESULTS AT LONGER RANGES, HOLD THE REMOTE TRANSMITTER IN A VERTICAL POSITION AWAY FROM YOUR BODY AND ABOVE YOUR HEAD. TERRAIN, WEATHER, VEGETATION, TRANSMISSION FROM OTHER RADIO DEVICES, AND OTHER FACTORS WILL AFFECT THE MAXIMUM RANGE.**



# KEY DEFINITIONS



**REMOTE TRANSMITTER:** Transmits the radio signal to the Collar Receiver. It is waterproof and can be submerged in water to a depth of 25 feet.

**INTENSITY DIAL:** Provides multiple levels of static stimulation so you can match the correction to your dog's temperament.

**TRANSMITTER INDICATOR LIGHT:** Indicates that a button is pressed and also serves as a low-battery indicator.

**TOGGLE SWITCH:** This switch is factory-set so that the Remote Transmitter can control two Collar Receivers.

**UPPER BUTTON:** This button is factory-set to deliver medium continuous static stimulation.

**LOWER BUTTON:** This button is factory-set to deliver low continuous static stimulation.

**SIDE BUTTON:** This button is factory-set to deliver high continuous static stimulation.

**CHARGING JACK:** For connecting the charger. Although the Remote Transmitter is waterproof without it, keep the cover in place when not charging to keep debris out of the opening.

**MODE BUTTON:** This button gives you the ability to change the mode of your Remote Transmitter (see pages 10-11).

**COLLAR RECEIVER:** Receives the radio signal from the Remote Transmitter and delivers the static, vibration, or tone stimulation for correcting or cueing your dog. It is waterproof and can be submerged in water to a depth of 25 feet.

**RECEIVER INDICATOR LIGHT:** Indicates when the Collar Receiver has been turned on or off, serves as a low-battery indicator, and also indicates when a continuous or momentary (nick) static stimulation button is pressed.

**CONTACT POINTS:** The contacts through which the Collar Receiver delivers static stimulation.

**ON/OFF BUTTON:** Momentarily pressing and releasing this button turns the Collar Receiver on and off.

## THE COLLAR RECEIVER IS CAPABLE OF DELIVERING FOUR TYPES OF STIMULATION

**CONTINUOUS:** You control both when and how long static stimulation is delivered, up to a maximum of 10 seconds. After 10 seconds, the stimulation will "time out" and the Transmitter button needs to be released and then pressed again before additional static stimulation can be delivered.

**MOMENTARY (NICK):** Static stimulation is delivered for 1/10 of a second, regardless of how long the button is pressed.

**TONE:** The Collar Receiver will make a rapid beeping noise when a Tone button is pressed.\*

**VIBRATION:** The Collar Receiver will vibrate when a Vibration button is pressed, up to a maximum of 10 seconds.\*

\*Tone and vibration come preset and are not adjustable

# STEP::01

## PREPARE THE REMOTE TRANSMITTER

### CHARGE THE REMOTE TRANSMITTER

1. Lift the rubber cover protecting the Charging Jack.
2. Connect the corresponding charge connector to the Charging Jack.
3. Plug the charger into a standard 120/240-volt AC wall outlet.
4. Charge the Remote Transmitter for 2 hours for the first charge and every charge thereafter.
5. When charging is complete, replace the rubber cover.

**Using Li-Ion technology, the Remote Transmitter only requires a 2 hour charge. It is not harmful to let the unit charge for more than 2 hours.**

*NOTE: Approximate battery life between charges is 40 to 60 hours, depending on frequency of use.*



CHARGE  
CONNECTOR  
PLACED IN  
THE REMOTE  
TRANSMITTER  
CHARGING JACK

### TRANSMITTER INDICATOR LIGHT

OPERATIONAL MODE	LIGHT COLOR	BATTERY STATUS	LIGHT FUNCTION
Continuous static, tone, or vibration stimulation button pressed	Green	Good	Light is solid in color while button is pressed
Continuous static, tone, or vibration stimulation button pressed	Red	Low	Light is solid in color while button is pressed
Momentary static stimulation button pressed	Green	Good	Light flashes once and turns off
Momentary static stimulation button pressed	Red	Low	Light flashes once and turns off
Unit is charging	Green	Low	Light is solid in color while on the charger
Unit is fully charged (charger still connected)	Green	Good	Light flashes once per second once the battery is completely charged

# STEP::02

## PREPARE THE COLLAR RECEIVER

### CHARGE THE COLLAR RECEIVER

1. Align the Contact Points with the Charging Cradle, making sure the hole on the Charging Cradle aligns with the Receiver Indicator Light.
2. Push the Charging Cradle up and back on the Collar Receiver, until the cradle snaps into place (2A).
3. Plug the charge connector into the Charging Cradle (2B).
4. Plug the charger into a standard 120/240-volt AC wall outlet.
5. Charge the Collar Receiver for 2 hours during the first charge, and every charge thereafter. Remove both the charge connector and Charging Cradle from the Collar Receiver once charged. The Charging Cradle is not intended to be attached when the Collar Receiver is in use.

**Using Li-Ion technology, the Collar Receiver only requires a 2 hour charge. It is not harmful to let the unit charge for more than 2 hours.**



### TO TURN THE COLLAR RECEIVER ON

Press and release the On/Off Button. The Collar Receiver Indicator Light will come on and the Collar Receiver will beep 1-3 times depending on what stimulation range is chosen (page 9). The default is 2 (medium).

### TO TURN THE COLLAR RECEIVER OFF

Press and release the On/Off Button when the Receiver Indicator Light comes on solid red and the Collar Receiver beeps for 2 seconds.

To extend the life between charging cycles, turn the Collar Receiver off when it is not in use.

*NOTE: Approximate battery life between charges is 140 to 160 hours, depending on frequency of use.*



## RECEIVER INDICATOR LIGHT

OPERATIONAL MODE	LIGHT COLOR	BATTERY STATUS	LIGHT FUNCTION	SPEAKER FUNCTION	VIBRATION
Unit is turned on via On/Off Button	Green	Good	Light is solid in color during beep sequence	Beeps 1-3 times depending on stimulation range setting (2 is the default setting). Please see page 9.	N/A
Unit is turned on via On/Off Button	Red	Low	Light is solid in color during beep sequence		
Unit is turned off via On/Off Button	Red	N/A	Light is solid in color during beep sequence	Beeps continuously for 2 seconds	N/A
Unit is on	Green	Good	Light flashes every 2 seconds	N/A	N/A
Unit is on	Red	Low	Light flashes every 2 seconds	N/A	N/A
Unit is delivering continuous static stimulation	Red	N/A	Light is solid in color for as long as button is pressed (up to 10 seconds)	N/A	N/A
Unit is delivering momentary static stimulation	Red	N/A	Light will quickly flash once no matter how long button is pressed	N/A	N/A
Unit is delivering tone stimulation	Off	N/A	N/A	Unit will beep for as long as button is pressed	N/A
Unit is delivering vibration stimulation	Off	N/A	N/A	N/A	Unit will vibrate for as long as button is pressed (up to 10 seconds)
Unit is charging	Green	Low	Light is solid in color while on the charger	N/A	N/A
Unit is fully charged (charger still connected)	Green	Good	Light flashes once per second once the battery is completely charged	N/A	N/A

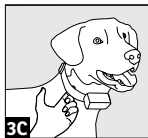
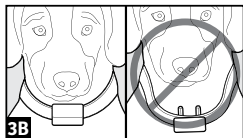
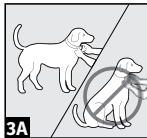
## STEP::03

### FIT THE COLLAR RECEIVER

**IMPORTANT: THE PROPER FIT AND PLACEMENT OF THE COLLAR RECEIVER IS IMPORTANT FOR EFFECTIVE TRAINING. THE CONTACT POINTS MUST HAVE DIRECT CONTACT WITH YOUR DOG'S SKIN.**

To ensure a proper fit, follow these steps:

1. With your dog standing (3A), center the Collar Receiver so the Contact Points are underneath your dog's neck, touching the skin (3B). If your dog has a long or thick coat, you have two options to ensure consistent contact: either trim the hair around the Contact Points or switch to the longer Contact Points included with your system.
2. The Collar Receiver should fit snugly, yet loose enough to allow one finger to fit between the strap and your dog's neck (3C).
3. Allow your dog to wear the collar for several minutes, and then recheck the fit. Check the fit again as your dog becomes more comfortable wearing the Collar Receiver.



## STEP::04

### FIND THE BEST INTENSITY LEVEL FOR YOUR DOG

Your SportDOG® Brand system has multiple intensity levels. This allows you to choose the static stimulation level that is best for your dog. For training efficiency, it is important to find the right intensity level for your dog. This is called the Recognition Level, at which your dog looks around in curiosity, or flicks his ears.

*NOTE: Always start at the lowest level and work your way up.*

#### FINDING YOUR DOG'S RECOGNITION LEVEL

*NOTE: Every dog is different and you cannot predict where your dog's Recognition Level will be. Watch closely for any slight change in behavior that demonstrates your dog is feeling the static stimulation.*

1. With the Collar Receiver turned on and properly fitted to your dog, set the Remote Transmitter's Intensity Dial at Level 1 and press the Continuous Static Stimulation Button for 1 to 2 seconds.
2. If your dog shows no reaction to Level 1, go to Level 2 and repeat the process.
3. **YOUR DOG SHOULD NOT VOCALIZE OR PANIC WHEN RECEIVING STATIC STIMULATION. IF THIS HAPPENS, THE STATIC STIMULATION LEVEL IS TOO HIGH AND YOU NEED TO GO BACK TO THE PREVIOUS LEVEL AND REPEAT THE PROCESS.**
4. Once you find your dog's Recognition Level, this is the level you should use when you begin a training exercise.
5. If you have progressed to the highest static stimulation level while searching for your dog's Recognition Level and your dog continues to show no response, check to see if the Collar Receiver is snug against your dog's neck. Then go back to Intensity Level 1 and repeat the process. If your dog still does not indicate he is feeling the static stimulation, you have three options: you may either have to trim the hair beneath the Contact Points, switch to the longer Contact Points included in your system, or change to a higher static stimulation range.

If after completing all of these steps your dog still does not indicate he is feeling the static stimulation, please contact the Customer Care Center at 1-800-732-0144.



## CHANGING STATIC STIMULATION RANGES

Your SportDOG® Brand Collar Receiver comes with 3 static stimulation ranges (low, medium, and high). In the Remote Transmitter's default mode (see page 10) there are 21 static stimulation levels within each range, with 1 being the lowest and 21 being the highest. The default range setting for the Collar Receiver is 2 or medium.

To change the range of static stimulation, follow these steps:

1. Make sure the Collar Receiver is off.
2. Then turn the unit on by pressing and releasing the On/Off button.
3. After the Indicator Light turns off and within 5 seconds, press and hold the On/Off button for 3 seconds.
4. The Collar Receiver will then beep and the Indicator Light will flash orange as indicated by the chart below. Continue to hold the button until the number of beeps/orange flashes equals the desired stimulation range shown.
5. Release the button once the desired range is selected; the Collar Receiver will turn off.
6. Turn the unit back on. It will then beep according to the static stimulation range selected in Step 4.

BEEPS	STATIC STIMULATION RANGE	DOG TEMPERAMENT
1 beep	Low	Mild
2 beeps	Medium	Moderate
3 beeps	High	Stubborn

## GENERAL TRAINING TIPS

### BEFORE TRAINING YOUR DOG WITH THIS PRODUCT

You will have the most success using this remote trainer if you always remember to teach a command before trying to reinforce the command with a remote trainer. We recommend that you read the enclosed Basic Training Manual before training with this remote trainer. Your training will be easier and proceed faster if you follow the guidelines in the Basic Training Manual and this Operating Guide. In addition, always keep the following training tips in mind:

- Eliminate one misbehavior or teach one obedience command at a time. If you move too fast with the training, your dog may become confused.
- Keep your training sessions positive, short, and frequent. If you or your dog become frustrated or confused, it's best to take a break.
- Be consistent. Give your dog a tone, vibration, or static stimulation with each misbehavior.
- Do not overcorrect your dog. Use as few stimulations as possible to train your dog.
- Restrict your dog from situations in which he has a history of misbehaving unless you can supervise him and use your remote trainer for applying tone, vibration, or static stimulation.
- If you notice one situation in which your dog misbehaves repeatedly, set up this situation as a training session. This will dramatically increase your chances of success.
- If your dog has a timid reaction to the tone, vibration, or static stimulation (especially the first couple of times), do not be alarmed. Redirect his attention to a simple and appropriate behavior (i.e. a known command, such as "Sit").
- Never use your remote trainer to correct or eliminate any form of aggressive behavior. If your dog exhibits such behavior, contact a professional trainer. Aggression in dogs is the result of many factors – it may be a learned behavior or it may be brought on as a result of fear. Another factor contributing to aggression in dogs is social dominance. Every dog is different.

At this point, your remote trainer is ready to use. The Transmitter is factory set to mode 5:⬆, but you may wish to change the mode to fit your situation. See STEP 05 for an explanation of mode options.

# SD-1825X / SD-1825XCAMO MODE CHART (REFER TO PAGE 11 TO CHANGE MODE)

MODE : TOGGLE POSITION	NUMBER OF DOGS	TOGGLE SWITCH FUNCTION		UPPER BUTTON FUNCTION		LOWER BUTTON FUNCTION		SIDE BUTTON FUNCTION	
		↑	↓	DIAL 1-7	V/T	DIAL 1-7	V/T	DIAL 1-7	V/T
1:↑	2*	Dog 1	Dog 2	High Continuous Stimulation	Vibe	High Momentary Stimulation	Vibe	Tone	
1:↓	2	Dog 1	Dog 2	High Continuous Stimulation	Vibe	High Continuous Stimulation	Vibe	Locate Remote Beeper*	
2:↑	2	Dog 1	Dog 2	High Continuous Stimulation	Tone	High Momentary Stimulation	Tone	Vibe	
2:↓	2	Dog 1	Dog 2	High Continuous Stimulation	Vibe	Low Continuous Stimulation	Vibe	Tone	
3:↑	6^	Dogs 1-3	Dogs 4-6	Dog 1 (↑) / Dog 4 (↓)		Dog 2 (↑) / Dog 5 (↓)		Dog 3 (↑) / Dog 6 (↓)	
				High Continuous Stimulation	Tone	High Continuous Stimulation	Tone	High Continuous Stimulation	Tone
3:↓	2	Dog 1	Dog 2	High Continuous Stimulation	Tone	Low Continuous Stimulation	Tone	Vibe	
4:↑	6	Dogs 1-3	Dogs 4-6	Dog 1 (↑) / Dog 4 (↓)		Dog 2 (↑) / Dog 5 (↓)		Dog 3 (↑) / Dog 6 (↓)	
				High Continuous Stimulation	Vibe	High Continuous Stimulation	Vibe	High Continuous Stimulation	Vibe
4:↓	2	Dog 1	Dog 2	Rising High Continuous Stimulation	Vibe	High Continuous Stimulation	Vibe	Tone	
5:↑*	2	Dog 1	Dog 2	Medium Continuous Stimulation	Tone	Low Continuous Stimulation	Tone	High Continuous Stimulation	Tone
5:↓	2	Dog 1	Dog 2	Rising High Continuous Stimulation	Tone	High Continuous Stimulation	Tone	Vibe	
6:↑	2	Dog 1	Dog 2	Medium Continuous Stimulation	Vibe	Low Continuous Stimulation	Vibe	High Continuous Stimulation	Vibe
6:↓	2	Dog 1	Dog 2	High Continuous Stimulation	Vibe	Tone	Vibe	Remote Launcher**	
7:↑	2	Dog 1	Dog 2	High Continuous Stimulation	Tone	High Momentary Stimulation	Tone	Locate Remote Beeper*	
7:↓	2	Dog 1	Dog 2	High Continuous Stimulation	Tone	Vibe	Tone	Remote Launcher**	
V/T (ID CODE)	N/A	↑		N/A		N/A		See STEP 08	

# STEP::05

## PROGRAM THE REMOTE TRANSMITTER

Your Remote Transmitter has 14 operational modes (seven with the toggle switch in the **grey/↑** position and seven with the toggle in the **orange/↓** position) to allow you to select the best match for your type or style of training. The Remote Transmitter is factory set to mode **5:↑**. There is also one programming mode (Mode V/T) which allows you to change the system's ID code.

### TO CHANGE THE MODE

1. Referring to the "SD-1825X / SD-1825XCAMO MODE CHART" on page 10, choose your desired mode number (1-7) and toggle position (↑ or ↓). Adjust both the Intensity Dial and Toggle Switch to match your desired mode.
2. Turn the Remote Transmitter over and remove the belt clip (if attached).
3. Using a pen or the tine on the buckle of your collar strap, press and release the Mode Button. When the Mode Button is pressed, the Transmitter Indicator Light will be solid in color. When it is released, it will flash a number of times that corresponds to the mode selected.

For example, if mode **6:↑** is desired, switch the toggle to the **grey/↑** position and adjust the Intensity Dial to Level 6. Once the Mode Button has been depressed, the Transmitter Indicator Light will be solid, and once the Mode Button is released, the Transmitter Indicator Light will flash 6 times. However, if you select Mode V/T (ID Code) in the **grey/↑** position, the light will remain solid in color once the Mode Button is released.



- \* Factory Default Mode.
- ♦ For two-dog operation setup refer to STEP 07 on page 12.
- ^ For three and six-dog operation setup refer to STEP 07 on page 13.
- Locate Remote Beeper: The Side Button turns run mode off and locates the Remote Beeper. To enable run mode again, press and hold the Side Button for 3 seconds.
- » Remote Launcher: Match your SD-1825X or SD-1825XCAMO Transmitter to your Launcher Receiver by pressing and holding the Launcher Receiver's On/Off button. When a "P" appears on the Receiver's LCD, press the Upper Button on your Remote Transmitter. Your Remote Transmitter and Launcher Receiver are now matched. The Side Button on your Remote Transmitter will be used to activate your Launcher basket.

## STEP::06

### MATCH THE COLLAR RECEIVER AND REMOTE TRANSMITTER

To match the Collar Receiver to work with a new Remote Transmitter or to reprogram a new Collar Receiver to work with your existing Remote Transmitter:

1. Turn off the Collar Receiver.
2. Press and hold the On/Off Button. The Receiver Indicator Light will come on, then turn off after 4-5 seconds. If the On/Off Button is released too early, the Receiver Indicator Light will begin flashing as normal. If this occurs, start over from Step 1.
3. After the Receiver Indicator Light has turned off, release the On/Off Button.
4. Press and hold the Upper Button on the Remote Transmitter until the Receiver Indicator Light flashes 5 times. Once the Receiver Indicator Light has flashed 5 times, the Collar Receiver has been matched and will begin flashing as normal. If the Receiver Indicator Light does not flash 5 times, start over from Step 1.

## STEP::07

### PROGRAM THE SYSTEM FOR MULTI-DOG OPERATION

SportDOG® Add-A-Dog® Collar Receivers must be purchased to train additional dogs in two, three, or six-dog mode. Please refer to the chart on page 13 for compatible Add-A-Dog Collar Receivers for these systems.

#### TWO-DOG OPERATION

SportDOG Collar Receivers can be set to respond to either the **↑** or **↓** toggle position on the Remote Transmitter.

1. Program the Remote Transmitter to mode 1, 2, 5, 6, or 7 with the toggle in the **grey/↑** position, or any mode with the toggle in the **orange/↓** position (see pages 10-11).
2. Next, with the toggle switch in the **grey/↑** position, you can now program the first Collar Receiver.
  - A. Turn off the Collar Receiver.
  - B. Press and hold the On/Off Button on the Collar Receiver. The Receiver Indicator Light will come on, then turn off in 4-5 seconds. If the On/Off Button is released too early, the Receiver Indicator Light will begin its normal flashing. If this occurs, start over and repeat from A.
  - C. After the Receiver Indicator Light has turned off, release the On/Off Button.
  - D. Press and hold the Upper Button on the Remote Transmitter until the Receiver Indicator Light flashes 5 times. If the Receiver Indicator Light does not flash 5 times, start over and repeat from A.
3. To program the second Collar Receiver, repeat steps A through D, but with the toggle switch in the **orange/↓** position.



TOGGLE SWITCH  
SET TO **GREY/↑**  
FOR DOG 1 OR SET  
TO **ORANGE/↓**  
FOR DOG 2.

## THREE-DOG OPERATION

1. Program the Remote Transmitter to mode 3 or 4 with the toggle in the **grey/↑** position (see pages 10-11).
2. Program the first Collar Receiver:
  - A. Turn off the Collar Receiver.
  - B. Press and hold the On/Off Button on the Collar Receiver. The Receiver Indicator Light will come on, then turn off in 4-5 seconds. If the On/Off Button is released too early, the Receiver Indicator Light will begin its normal flashing. If this occurs, start over and repeat from **A**.
  - C. After the Receiver Indicator Light has turned off, release the On/Off Button.
  - D. Press and hold the **Upper Button** on the Remote Transmitter until the Receiver Indicator Light flashes 5 times. If the Receiver Indicator Light does not flash 5 times, start over and repeat from **A**.
3. To program the second Collar Receiver, repeat steps **A** through **D**, using the **Lower Button** in place of the Upper Button.
4. To program the third Collar Receiver, repeat steps **A** through **D**, using the **Side Button** in place of the Upper Button.

## SIX-DOG OPERATION

Repeat Steps 1-4 from "THREE-DOG OPERATION" above for dogs 1-3, then flip the toggle switch to the **orange/↓** position and repeat Steps 2-4 for dogs 4-6.

ADD-A-DOG® MODEL	
SDR-AF / SDR-AXF	Original Collar Receiver for: SD-425X & SD-825X
SDR-AS / SDR-AXS	Original Collar Receiver for: SD-425XS
SDR-AC / SDR-AXC	Original Collar Receiver for: SD-425XCAMO
SDR-A / SDR-AX	Original Collar Receiver for: SD-1225X, SD-1825X & SD-2525
SDR-AW / SDR-AXW	Original Collar Receiver for: SD-1825XCAMO
SDR-AH	Original Collar Receiver for: SD-3225
SDR-AB	Original Collar Receiver for: SD-1875

# STEP::08

## CHANGE ID CODES

An ID Code is the signal identification between the Remote Transmitter and Collar Receiver. Each is programmed in 1 of 2,000 ID Codes from the factory. The Remote Transmitter has the flexibility to program two or more Remote Transmitters to the same ID Code, allowing them to control one Collar Receiver. There are 64 programmable ID Codes available.

### TO MANUALLY PROGRAM A REMOTE TRANSMITTER'S ID CODE

1. Turn the Intensity Dial to V/T, with the toggle switch in the **grey/↑** position, and then press and release the Mode Button on the back of your Remote Transmitter. This does not change the mode, so the current mode will still be active after the ID change is complete.
2. Once the Mode Button is released, the Transmitter Indicator Light will illuminate solid green and stay on for 15 seconds.
3. While the green Indicator Light is on, turn the Intensity Dial to select the 1st digit of the ID and then press and release the Side Button. The green Indicator Light will flash rapidly confirming selection.
4. Again, while the green Indicator Light is on, turn the Intensity Dial to select the 2nd digit of the ID and then press and release the Side Button. The green Indicator Light will flash rapidly confirming selection. The 2nd digit is optional and, if not desired, wait until the green light turns off and refrain from pressing the Side Button.
5. At the end of 15 seconds, or after the second press of the Side Button, the green Indicator Light will turn off and the ID of the Remote Transmitter will be updated. At this point, the Remote Transmitter will be in the same mode it was in prior to setting the ID.
6. Upon changing the ID Code, you will need to match the Collar Receiver to the Remote Transmitter (see STEP 06).

*NOTE: If you press the Side Button only once (skipping Step 4) the ID is still a two digit ID. The left digit is defaulted to 1. For example, if you selected 6 in Step 3 and pressed the Side Button only once, the ID you get will be 16.*

### TO RETURN THE REMOTE TRANSMITTER TO THE FACTORY ID

1. Turn the Intensity Dial to V/T, with the toggle switch in the **grey/↑** position, and then press and release the Mode Button on the back of your Remote Transmitter. This does not change the mode, so the current mode will still be active after the ID change is complete.
2. Do not press any buttons and wait until the green Transmitter Indicator Light turns off.
3. You will need to match the Collar Receiver to the Remote Transmitter (see STEP 06).

---

## ACCESSORIES

To purchase additional accessories for your SportDOG Brand® product visit our website at [www.sportdog.com](http://www.sportdog.com), contact the Customer Care Center at 1-800-732-0144, or visit a retailer near you.

## FREQUENTLY ASKED QUESTIONS

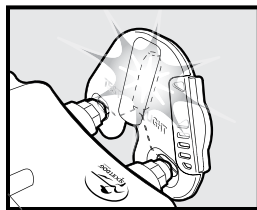
<b>Is the static stimulation safe for my dog?</b>	While Continuous or Momentary static stimulation may be unpleasant, it is harmless to your dog. Electronic training devices require interaction and training from the owner to achieve desired results.
<b>How old does a dog have to be before using this remote trainer?</b>	Age is not as important as your dog's developmental ability to learn. Your dog should be able to learn basic obedience commands such as "Sit" or "Stay." The Collar Receiver may be too large for dogs under 8 pounds.
<b>Once my dog is trained and has been obeying my commands, will my dog have to continue to wear the Collar Receiver?</b>	Your dog may need to wear the Collar Receiver from time to time for reinforcement. Also, many hunters keep the Collar Receiver on their dogs while hunting for maximum control because they possess a high drive and experience many distractions while in the field.
<b>Is the Collar Receiver waterproof?</b>	Yes. If the rechargeable battery pack ever needs to be replaced, make sure the o-ring and o-ring groove are free from dirt and debris.
<b>Can my Collar Receiver be used around salt water?</b>	If the Collar Receiver is used in or around salt water, the Collar Receiver should be rinsed with fresh water following each use.
<b>Can I use this remote trainer with more than one dog?</b>	Yes, your remote trainer is expandable to a maximum of 6 dogs. SportDOG® Add-A-Dog® Collar Receivers must be purchased. Please refer to STEP 07 (page 13) for a list of compatible Collar Receivers.
<b>Can I use this remote trainer on aggressive dogs?</b>	We do not recommend any of our products to be used on aggressive dogs. We recommend you contact your local veterinarian or professional trainer if you believe your dog might be aggressive.
<b>Will I get the exact range claimed with this remote trainer?</b>	The range you get with your remote trainer will vary according to terrain, weather, vegetation, as well as transmission from other radio devices. To get the maximum amount of range, please refer to "How the System Works" section of this guide.
<b>How long can I continuously deliver static stimulation to my dog?</b>	The maximum amount of time you can press the Continuous Static Stimulation Button and deliver static stimulation to your dog continuously is 10 seconds. After 10 seconds, the Remote Transmitter will "time-out," and the Continuous Static Stimulation Button must be released and pressed again.
<b>What do I do if my dog's neck becomes red and irritated?</b>	This condition is due to the Contact Points irritating the skin. Discontinue use of the Collar Receiver for a few days. If the condition persists beyond 48 hours, see your veterinarian. Once the skin returns to normal, resume use, and monitor the skin condition closely. Avoid leaving the collar on your dog for more than 12 hours per day.
<b>The Intensity Dial seems difficult to rotate. Is this normal?</b>	Yes. This prevents accidental changes in intensity and encourages an optimal waterproof seal. The knob will "break in" and be slightly easier to turn as you use it.
<b>Can I attach a leash to this remote trainer?</b>	DO NOT attach a leash to your remote trainer. You may put a separate non-metallic collar on your dog's neck and attach a leash. Be sure the extra collar does not interfere with the Contact Points.
<b>My Remote Transmitter is sending a signal to more than one Collar Receiver unintentionally, what should I do?</b>	In the rare event this occurs, you can change your Remote Transmitter's ID Code (see STEP 08).

## TROUBLESHOOTING

The answers to these questions should help you solve any problem you have with this system. If they do not, please contact the Customer Care Center at 1-800-732-0144 or visit our website at [www.sportdog.com](http://www.sportdog.com).

<b>My dog is not responding when I press a button.</b>	<ul style="list-style-type: none"><li>• Check to see if the Collar Receiver has been turned on and the Indicator Light is flashing.</li><li>• If your range has reduced from the first time you have used it, please check to see if the battery is low in either the Remote Transmitter or Collar Receiver.</li><li>• Many factors can impact the range you have with your system. For a list of these factors, please refer to "How the System Works".</li><li>• You can verify the Collar Receiver is delivering static stimulation to your dog by placing the test light, enclosed in your kit, on the Collar Receiver. Please refer to the "Test Light Instructions" section for details.</li><li>• Increase the Intensity Dial. Refer to "Find the Best Intensity Level for Your Dog" for more information.</li><li>• Increase the Static Stimulation Range. Refer to "Changing Static Stimulation Ranges" for more information.</li><li>• Make sure the Collar Receiver's Contact Points are placed snugly against your dog's skin. Refer to "Fit the Collar Receiver" for more information.</li><li>• You may need to switch to the longer Contact Points included with your system or trim the hair beneath the Contact Points. Never shave the dog's neck.</li><li>• If you notice your operating time dropping to about half the original time, your Collar Receiver battery needs to be replaced. Contact the Customer Care Center to purchase a new one.</li></ul>
<b>The Collar Receiver will not turn on.</b>	<ul style="list-style-type: none"><li>• Make sure the Collar Receiver has been charged. The Collar Receiver will charge in 2 hours.</li></ul>
<b>The Collar Receiver is not responding to the Remote Transmitter.</b>	<ul style="list-style-type: none"><li>• Make sure the Remote Transmitter has been charged. The Remote Transmitter will charge in 2 hours.</li><li>• Verify the Collar Receiver has been turned on and the Indicator Light is flashing. Refer to "Turning the Collar Receiver On and Off."</li><li>• Refer to "Match the Collar Receiver and Remote Transmitter."</li></ul>

## TEST LIGHT INSTRUCTIONS



1. Turn on the Collar Receiver.
2. Hold the Test Light Contacts to the Contact Points.
3. Press a Static Stimulation Button on the Remote Transmitter.
4. The Test Light will flash.  
*NOTE: At higher Static Stimulation Levels, the Test Light will flash brighter.*
5. Turn off the Collar Receiver.

Save the Test Light for future testing.

**NOTE:** If the Test Light does not flash, recharge the battery and re-test. If the Test Light still does not flash, contact the Customer Care Center at 1-800-732-0144.



# BATTERY

This system operates on two Li-Ion battery packs. Only replace with battery received from calling the Customer Care Center at 1-800-732-0144.

- Batteries should never be removed from the battery compartment for charging.
- The rechargeable Lithium Ion (Li-Ion) batteries are not memory sensitive, do not require depletion before charging, and cannot be over charged.
- The batteries come partially charged from the factory, but will require a full charge before the first use.
- **When storing the unit for long periods, remember to regularly give batteries a full charge. This should be done once every 3 to 4 months.**
- You should expect hundreds of recharge cycles from your batteries. However, all rechargeable batteries lose capacity over time relative to the number of recharge cycles they experience. This is normal. If your operating time drops to half of the original life, contact the Customer Care Center to purchase a new battery.
- The batteries should last for a period of 3-5 years. When a battery needs replacement, you can order a new pack by calling our Customer Care Center at 1-800-732-0144. Please do not open the Collar Receiver or Remote Transmitter until you have received the replacement.

## **AT END OF PRODUCT LIFE, USE THESE BATTERY REMOVAL INSTRUCTIONS FOR FINAL DISPOSAL (DO NOT OPEN THE COLLAR RECEIVER OR REMOTE TRANSMITTER UNTIL YOU HAVE RECEIVED THE REPLACEMENT):**

- Using a #1 Phillips screwdriver for your Remote Transmitter and/or a 3/32 Hex Key for your Collar Receiver, remove the case screws.
- Remove the case back or cover.
- Remove the old battery pack.

These instructions are not valid for repair or battery replacement. To avoid invalidating your warranty, please call the Customer Care Center at 1-800-732-0144 for help in replacing your battery with one that is specifically approved by Radio Systems Corporation®.



REALTREE MAX-5 Camouflage Pattern ©2013 of Jordan Outdoor Enterprises, Ltd., all rights reserved.



**GEAR THE WAY  
YOU'D DESIGN IT®**



**GEAR THE WAY  
YOU'D DESIGN IT<sup>®</sup>**

**SPORTDOG.COM**

©2018 RADIO SYSTEMS CORPORATION  
Radio Systems Corporation • 10427 PetSafe Way • Knoxville, TN 37932 • 1.800.732.0144  
L400-2250