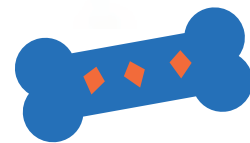
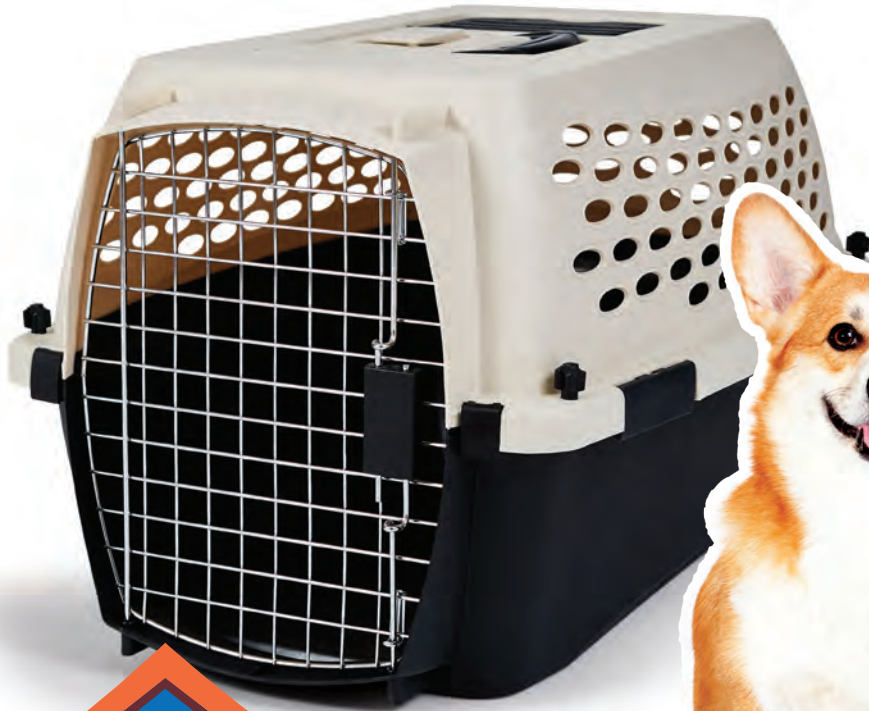
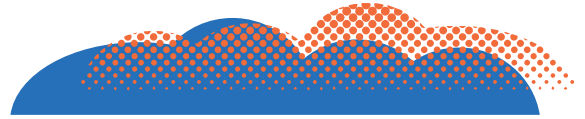
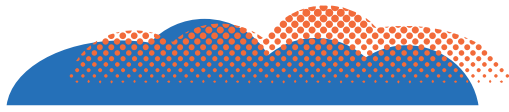


frisco.
better pet goods



X-SMALL TO SMALL KENNEL

INSTRUCTION MANUAL

PARTS INCLUDED

- ☑ Plastic Top Section
- ☑ Plastic Bottom Section
- ☑ Steel Door
- ☑ 4 Bolts
- ☑ 4 Wing Nuts

You will need only 4 bolts and 4 wing nuts for assembly, but each assembly packet will contain additional parts.



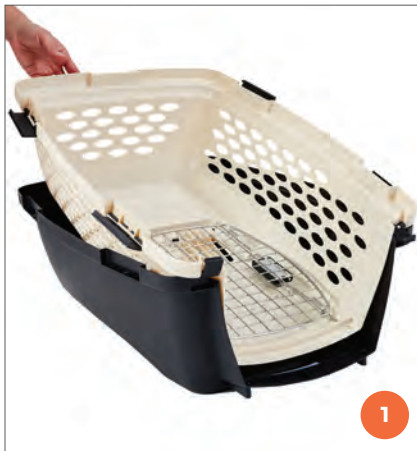
bolt



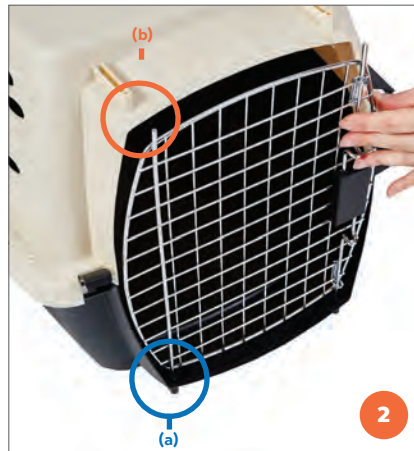
wing nut

KENNEL ASSEMBLY INSTRUCTIONS

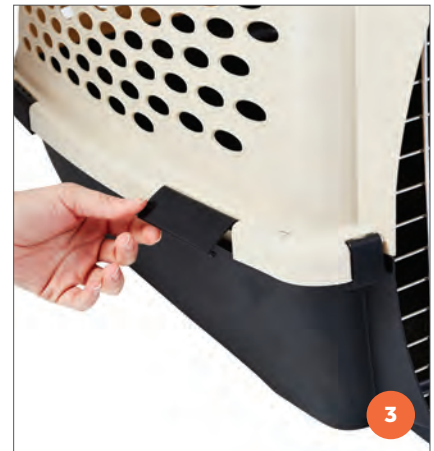
Assembly instructions for kennel models 120133 (X-Small 19-inch) and 120134 (Small 24-inch).



STEP 1 Separate the top section from the bottom section and loosely place the top half on the bottom half.



STEP 2 Lift the front of the top section as shown, and put the steel door in place by setting the bottom two rods into the holes on the bottom section (a). Insert the top two rods into the holes on the top section (b).



STEP 3 Make sure the top and bottom sections are aligned. Secure the top to the bottom by pushing down the seven snap latches that are attached to the top half. If something seems off, make sure the top and bottom are still aligned before snapping the remaining latches shut. Check the latches before each use to make sure the two halves are securely attached.



STEP 4 To open the door, squeeze the two pins together and then pull on the door while keeping the pins together.



5a



5b

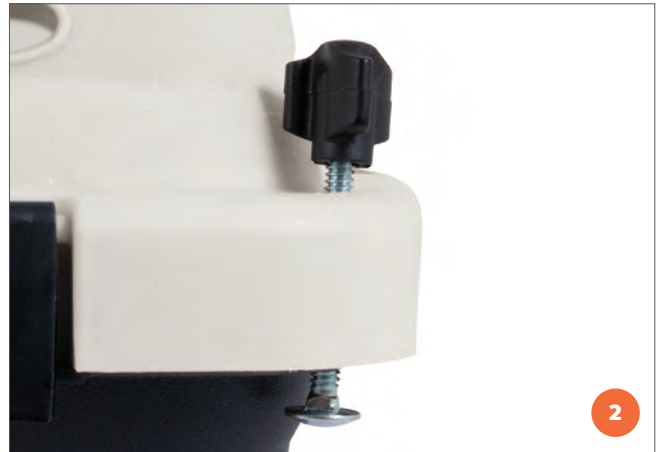
STEP 5 For airline security purposes only, insert nylon zip tie (not included) through hole behind latch and secure tightly.



WING NUT AND BOLT INSTALLATION INSTRUCTIONS



STEP 1 Locate the four corner holes on the rim of the assembled kennel. Insert a bolt from the underside of the rim through each corner hole, and secure the bolts by screwing them into wing nuts on the top side.



STEP 2 Tighten the wing nuts by hand only. Check the wing nuts before each use to make sure they are fully tightened and secure.



NOTE: Securing the kennel with wing nuts and bolts is required for airline travel. Always check with your airline prior to making any travel plans with your pet.

WEIGHT RECOMMENDATIONS

For your pet's safety, please follow the recommended weight limitations for each kennel model. Never use a kennel for a pet that exceeds the maximum stated weight.

X-SMALL 19-in (19.6" x 12.3" x 10.8") **Up to 10 lbs**

SMALL 24-in (24.1" x 16.7" x 14.5") **10 to 20 lbs**

MAINTENANCE

To give your pet the most comfortable home away from home, clean the kennel routinely with a mild, non-toxic cleaner and water.



MADE WITH 95% PRE-CONSUMER
RECYCLED PLASTIC CONTENT.

ASSEMBLED IN USA
WITH FOREIGN AND DOMESTIC COMPONENTS.

QUESTIONS?

CALL OUR FRIENDLY CUSTOMER SERVICE TEAM ANYTIME
AT 1-800-672-4399. WE'RE HERE 24/7!

DISTRIBUTED BY CHEWY, INC.
DANIA BEACH, FL 33004
1-800-672-4399

KENNEL TRAVEL AND TRAINING TIPS



PROPER SIZING

First things first. Make sure you have the right size kennel for your pet, taking height and weight into consideration. Be sure to follow the recommended weight guidelines, and make sure your pet can stand up, turn around and lie down comfortably in the kennel.



PLAN AHEAD

Whether you're taking a weeklong vacation or just going to the vet, don't wait until the day of the trip to introduce your pet to her new kennel. Kennel training starts well before any travel is involved, and some animals will take longer than others to get used to their new spot.



POSITIVE ASSOCIATION

Your pet may have already made a negative association with pet carriers, or perhaps none at all. The trick is to help her associate the crate with a feeling of being safe and happy. Leave the kennel out with the door open well before any planned trip. Place some of her favorite toys or treats inside after speaking with your veterinarian or trainer. You can also put the kennel next to you when you're watching TV or reading, and let your pet enjoy treats inside it. This should slowly help her feel okay about being in the kennel.



PRACTICE RUNS

Before using the kennel to take your pet someplace she doesn't want to go, like the vet, do a practice run and go somewhere fun. Take her on an adventure to the dog park, dog beach, a friend's house, or even just around the neighborhood and back so that being in the kennel isn't a cause for her to be scared or upset.



AIR TRAVEL

When you're traveling by plane with your pet, the number one thing to do is to contact the airline and make sure you understand their guidelines for flying with a pet. You don't want to have any problems at the airport that might cause stress for your pet or might cause you to miss your flight.

WARNINGS AND CAUTIONS

Because we care about the safety of you and your pet, we ask that you **READ AND FOLLOW ALL INSTRUCTIONS AND WARNINGS** before using your new kennel. This kennel is engineered to hold pets safely and securely under normal use for many years of service. When used properly, kennels are an invaluable tool for training and safe travel.

Improper use of this kennel may result in serious injury or even the death of your pet. Please observe the following cautions and guidelines:

- This kennel is not designed to restrain dangerous animals or aggressive dogs.
- To help prevent choking and other serious injuries, always remove all collars, tags, leashes, harnesses and other items, such as pet clothing, before placing the pet in the kennel.
- Pets should not be left unattended in the kennel until you are certain that the pet will respond properly to being left in the kennel.
- Keep in mind that a pet not specifically and properly kennel trained may attempt to escape, dig and/or chew their way out of the kennel, causing serious harm or death to the pet.
- Consult your veterinarian or trainer to determine an appropriate training method and length of time your pet can safely be left in the kennel. Every pet has unique needs, so what's right for one might not work for another.
- Do not place any other items, such as toys or food, in the kennel with your pet unless your veterinarian or trainer says that it is safe to do so.
- Never place more than one pet in the kennel at a time. Each kennel is designed for a specific weight range and provides enough room for only one pet to move about comfortably.
- Do not use kennels in place of outdoor runs or long-term holding cages. Remember that pets need time to socialize, exercise and go potty! Consult your veterinarian or trainer to determine the appropriate amount of time that your pet can safely and comfortably be left in their crate. Young animals, especially, should be allowed out of their kennel for frequent potty and play breaks. Many adult animals will tolerate kenneling during a normal workday, but a midday visit for potty breaks and socializing with the animal is strongly encouraged. Also keep in mind the needs of senior pets that might have less bladder or bowel control.
- Please do not allow children to play in, on or around the kennel. Keep the kennel door closed around children to eliminate the hazard of running into hinge and latch pins on an open door.
- Periodically inspect the plastic shell for cracks, especially after exposing the kennel to severe shocks, changes in temperature or other harsh or challenging conditions.
- Never stack kennels with animals inside. Check and tighten the latches and screws periodically, especially before moving your animal in the kennel.
- Discourage aggressive behavior in the kennel. Biting, chewing, licking, ramming or pawing at either the plastic shell or metal wire parts may result in injury to the pet or damage to the kennel.
- Be cautious by slowly closing and opening the kennel door to avoid catching your pet's paws, ears, tail or snout in the door hinge or latch.
- To avoid heat injury or death, never leave pets in a closed car on a hot day or in direct sunlight. Even if it doesn't feel hot outside, car windows can cause a greenhouse effect, and temperatures can rise to well over 100 degrees inside a closed car within minutes! It's always best to be more cautious and take your pet with you than to guess. Never place the kennel in direct sunlight or leave your pet unattended in the kennel where there's a chance of it being in direct sunlight at any point in the day.
- Keep your pet's kennel clean to maintain your pet's hygiene. Nothing's worse than having to stay inside a messy kennel!
- While we are dedicated to providing the best for your pet, Chewy, Inc. is not responsible for any loss, damage, discomfort, injury, illness, death or costs of any kind as a result of improper use of this product, or for use of this kennel by a pet that has not been properly trained.

470669