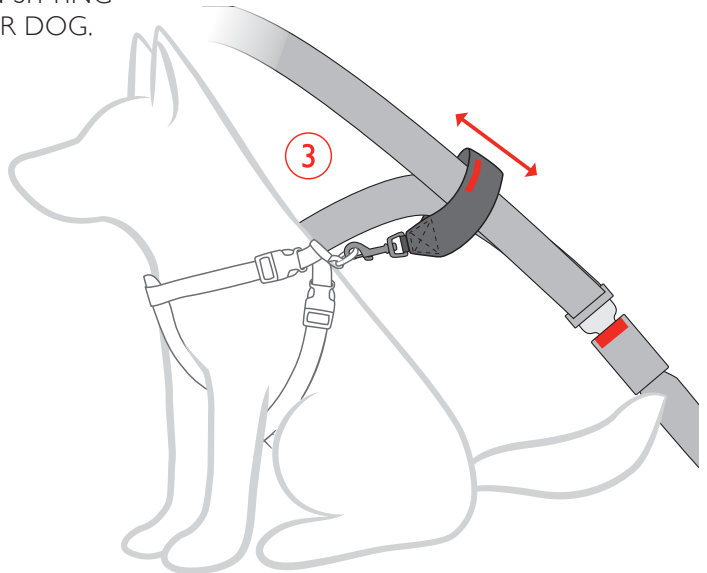
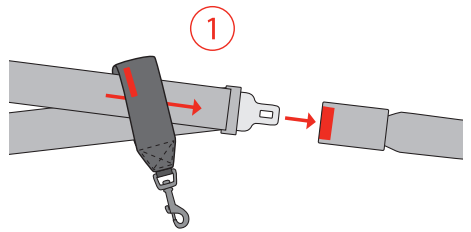


**FIT INSTRUCTIONS****CAR RESTRAINT ATTACHMENT**

1. FEED THE SEATBELT THROUGH THE CAR RESTRAINT LOOP AND CLICK THE SEAT BELT CLOSED.
2. ATTACH CAR RESTRAINT TO YOUR EZYDOG® HARNESS.
3. PULL THE CAR RESTRAINT ALONG THE SEATBELT DEPENDING ON SITTING HEIGHT OF YOUR DOG.

**NOW GO AND PLAY!**

for more information go to  
[www.ezydog.com](http://www.ezydog.com)